

21-1336

Jewish Home for the Aging

1885 Victory Blvd. Reseda, CA

CREATED: 10/07/2008

FM-07-109

CREATED BY: TNT

HEIGHT : 11'-9 11/16" POINTS: 3.34 Points.

SPACING : 24"

1st STUD: 5 3/4"

WEIGHTS :

FRAME : 420 lbs

SHEATHING: 164 lbs

TOTAL: 584 lbs

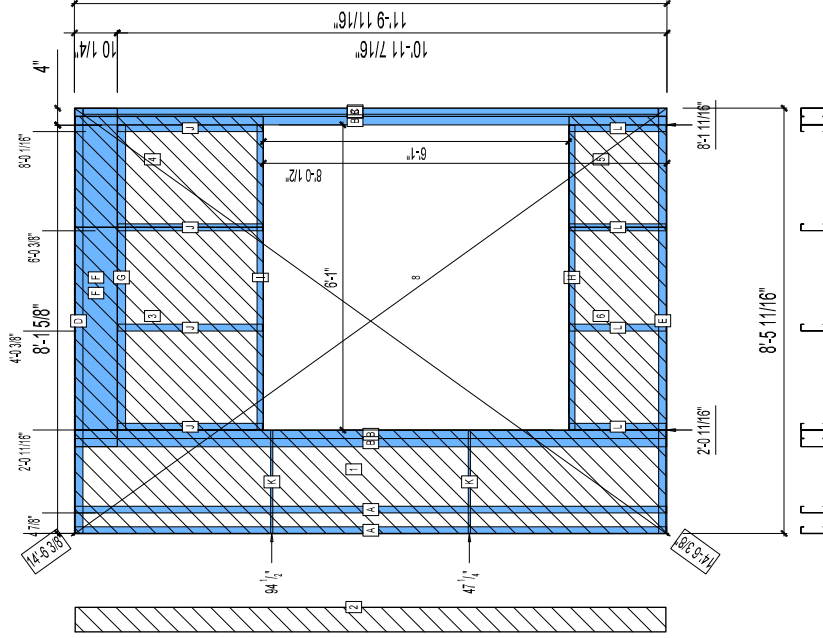
FrameMax, Inc.
13915 Danielson St
Suite 100
Poway, CA 92064
www.frame-max.com

FRAME MAX

© FrameMax Inc.

APPROVED

By TNT at 3:29 pm, Oct 28, 2008



PIECES LIST LABEL	QTY	SIZE	LENGTH	USE
A	2	600S162-68	11'-9 1/2"	STUD
B	4	600S200-97	11'-9 1/2"	KING STUD
C	1	600T150-33	11'-5 7/16"	CAP TRACK
D	1	600T200-68	8'-5 11/16"	TOP TRACK
E	1	600T200-68	8'-5 11/16"	BOTTOM TRACK
F	2	1000T200-97	6'-8 7/8"	HEADER
G	1	600T200-68	6'-0 7/8"	TOP TRACK
H	1	600T150-54	6'-0 3/4"	SILL
I	1	600T150-54	6'-0 3/4"	HEAD TRACK
J	4	600S162-54	2'-10 9/16"	CRIPPLE
K	2	1500U50-54	2'-0 1/2"	HORIZONTAL BRACING
L	4	600S162-54	1'-11 1/16"	CRIPPLE

SHEATHING LABEL	QTY	CODE	THICK	SIZE	SCREENS
1	1	DENSGLASS	1/2"	2'-0 5/8" X 11'-9 1/4"	8 - 12
2	1	DENSGLASS	1/2"	5 7/8" X 11'-9 1/4"	8 - 12
3	1	DENSGLASS	1/2"	4'-0 7/16" X 3'-9"	8 - 12
4	1	DENSGLASS	1/2"	2'-2 1/2" X 3'-9"	8 - 12
5	1	DENSGLASS	1/2"	2'-2 1/2" X 1'-11 5/16"	8 - 12
6	1	DENSGLASS	1/2"	4'-0 7/16" X 1'-11 5/16"	8 - 12