

11-1277

Jewish Home for the Aging

1885 Victory Blvd. Reseda, CA

FM-07-109

CREATED BY: AMB

FrameMax, Inc.
13915 Danielson St
Suite 100
Poway, CA 92064
www.frame-max.com



© FrameMax Inc.

HEIGHT : 11'-9 11/16" POINTS: 2.68 Points.

SPACING : 24"

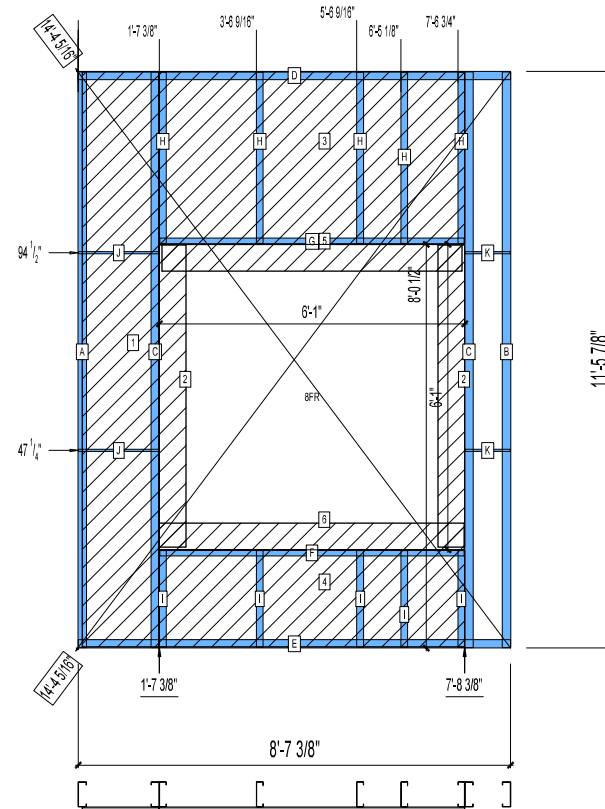
1st STUD: 24"

WEIGHTS :

FRAME : 290 lbs

SHEATHING: 157 lbs

TOTAL: 447 lbs



PIECES LIST

LABEL	QTY	SIZE	LENGTH	USE
A	1	600S200-97	11'-5 11/16"	STUD
B	1	600S200-97	11'-5 11/16"	EXTRA STUD
C	2	600S200-97	11'-5 11/16"	KING STUD
D	1	600T200-68	8'-7 3/8"	TOP TRACK
E	1	600T200-68	8'-7 3/8"	BOTTOM TRACK
F	1	600T150-54	6'-0 3/4"	SILL
G	1	600T150-54	6'-0 3/4"	HEAD TRACK
H	5	600S162-54	3'-4 15/16"	CRIPPLE
I	5	600S162-54	1'-11 1/16"	CRIPPLE
J	2	150U50-54	1'-7 3/16"	HORIZONTAL BRACING
K	2	150U50-54	10 3/4"	HORIZONTAL BRACING

SHEATHING

LABEL	QTY	CODE	THICK	SIZE	SCREWS
1	1	DENSGLASS	1/2"	1'-6 5/16" X 11'-5 7/16"	8 - 12
2	2	DENSGLASS	1/2"	6 3/8" X 6'-0 1/4"	8 - 12
3	1	DENSGLASS	1/2"	6'-1" X 3'-5 1/8"	8 - 12
4	1	DENSGLASS	1/2"	6'-1" X 1'-11 1/8"	8 - 12
5	1	DENSGLASS	1/2"	5'-11 3/4" X 6 3/8"	8 - 12
6	1	DENSGLASS	1/2"	6'-0 7/8" X 6 3/8"	8 - 12