

21-1222

Jewish Home for the Aging

1885 Victory Blvd. Reseda, CA

FM-07-109

CREATED BYTNT

FrameMax, Inc.
13915 Danielson St
Suite 100
Poway, CA 92064
www.frame-max.com



© FrameMax Inc.

HEIGHT : 11'-9 11/16" POINTS: 1.96 Points.

SPACING : 24"

1st STUD: 24"

WEIGHTS :

FRAME : 294 lbs

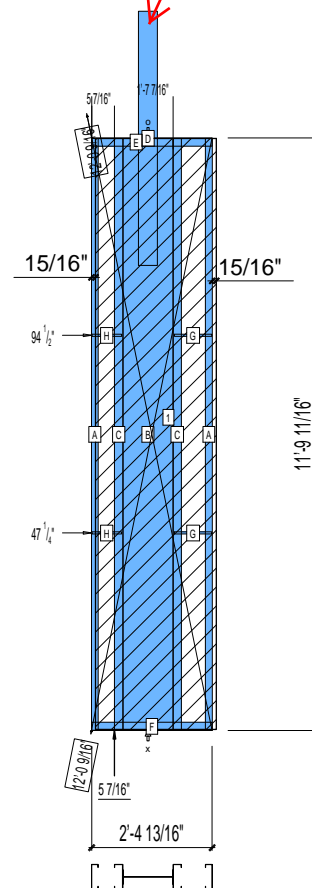
SHEATHING: 71 lbs

TOTAL: 365 lbs

APPROVED

By TNT at 11:47 am, Oct 29, 2008

REMOVE
HOLDDOWN STRAP



PIECES LIST

LABEL	QTY	SIZE	LENGTH	USE
A	2	600S162-68	11'-9 1/2"	STUD
B	1	1200i350p1062	11'-9 1/2"	PACO
C	2	600S200-68	11'-9 1/2"	STUD
D	1	D	5'-0 3/4"	HOLDDOWN
E	1	600T200-68	2'-4 13/16"	TOP TRACK
F	1	600T200-68	2'-4 13/16"	BOTTOM TRACK
G	2	150U50-54	8 15/16"	HORIZONTAL BRACING
H	2	150U50-54	7 1/16"	HORIZONTAL BRACING

SHEATHING

LABEL	QTY	CODE	THICK	SIZE	SCREWS
1	1	DENSGLASS	1/2"	2'-4 7/8" X 11'-9 1/4"	8 - 12