

# 21-1223

Jewish Home for the Aging

1885 Victory Blvd. Reseda, CA

FrameMax, Inc.  
13915 Danielson St  
Suite 100  
Poway, CA 92064  
www.frame-max.com



© FrameMax Inc.

CREATED: 10/02/2008

FM-07-109

CREATED BY: TNT

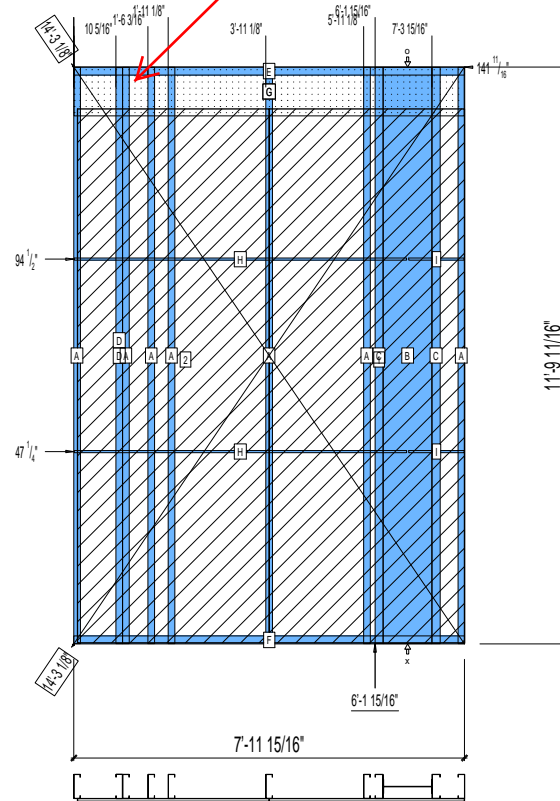
HEIGHT : 14'-3 15/16" POINTS: 4.09 Points.  
SPACING : 24"  
1st STUD: 24"

WEIGHTS :  
FRAME : 461 lbs  
SHEATHING: 318 lbs

TOTAL: 779 lbs

REMOVE U-BACKING

REMOVE HOLDOWN STRAP



PIECES LIST

LABEL	QTY	SIZE	LENGTH	USE
A	7	600S162-68	11'-9 1/2"	STUD
B	1	1200i350p1062	11'-9 1/2"	PACO
C	2	600S200-68	11'-9 1/2"	STUD
D	1	600S162-33	11'-9 7/16"	BACKER STUD
E	1	600T200-68	7'-11 15/16"	TOP TRACK
F	1	600T200-68	7'-11 15/16"	BOTTOM TRACK
G	1	1200D-54	7'-11 13/16"	STRAP
H	2	150U50-54	6'-9 5/8"	HORIZONTAL BRACING
I	2	150U50-54	1'-1 5/8"	HORIZONTAL BRACING

SHEATHING

LABEL	QTY	CODE	THICK	SIZE	SCREWS
1	1	SB-DENSARMOR	5/8"	3'-11 15/16" X 10'-11 1/8"	2-12
2	1	SB-DENSARMOR	5/8"	3'-11 1/16" X 10'-11 1/8"	2-12