

22-1060

Jewish Home for the Aging

1885 Victory Blvd. Reseda, CA

FrameMax, Inc.
13915 Danielson St
Suite 100
Poway, CA 92064
www.framemax.com

FRAME MAX

© FrameMax Inc.

CREATED: 11/11/2008

FM-07-109

CREATED BY: TNT

HEIGHT : 12'-5 7/8" POINTS: 6.05 Points.

SPACING : 5000"

1st STUD: 5000"

APPROVED

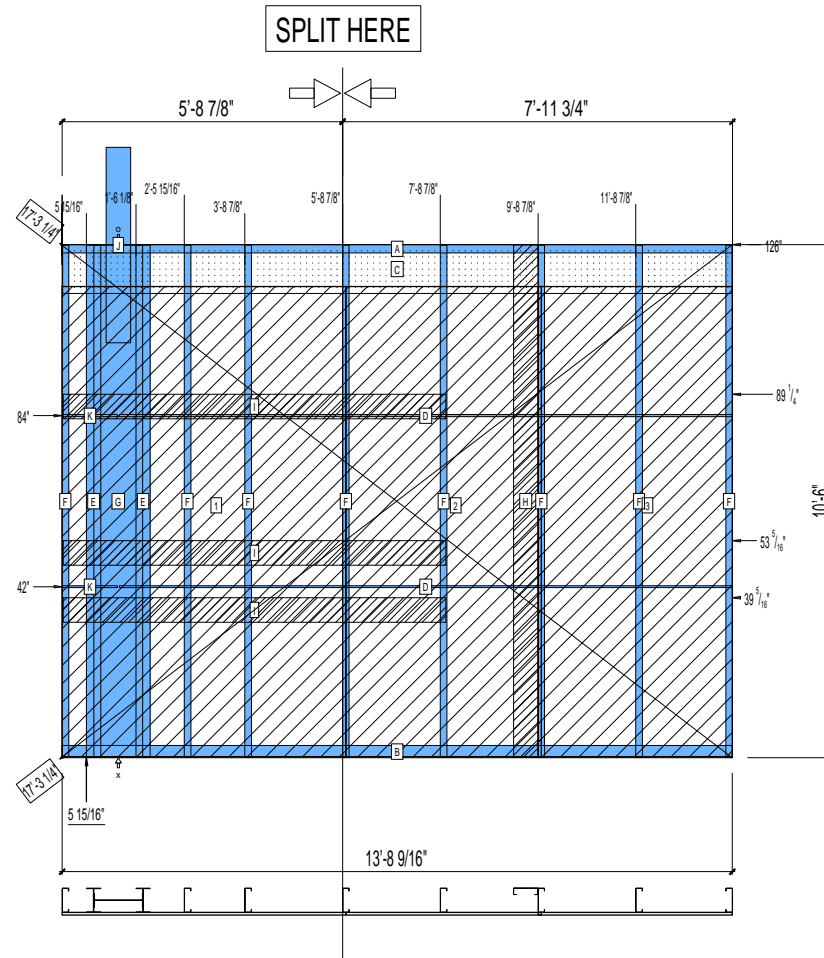
By TNT at 2:37 pm, Dec 05, 2008

WEIGHTS :

FRAME : 674 lbs

SHEATHING: 488 lbs

TOTAL: 1162 lbs



PIECES LIST

LABEL	QTY	SIZE	LENGTH	USE
A	1	600T200-68	13'-8 9/16"	TOP TRACK
B	1	600T300-68	13'-8 9/16"	BOTTOM TRACK
C	1	1200D-54	13'-8 3/8"	STRAP
D	2	150U50-54	12'-6 7/16"	HORIZONTAL BRACING
E	2	600i350p680	10'-5 13/16"	PACO
F	8	600S162-68	10'-5 13/16"	STUD
G	1	1200i350p1062	10'-5 13/16"	PACO
H	1	600S162-33	10'-5 13/16"	BACKER-U
I	3	600D-54	7'-10"	KITCHEN BACKING
J	1	C	4'-0"	HOLDDOWN
K	2	150U50-54	1'-1 7/16"	HORIZONTAL BRACING

SHEATHING

LABEL	QTY	CODE	THICK	SIZE	SCREWS
1	1	SB-DENSARMOR	5/8"	5'-9 5/8" X 9'-7 7/16"	3-12
2	1	SB-DENSARMOR	5/8"	3'-11 15/16" X 9'-7 7/16"	3-12
3	1	SB-DENSARMOR	5/8"	3'-11 11/16" X 9'-7 7/16"	3-12