

22-1079

CREATED: 11/12/2008

Jewish Home for the Aging

1885 Victory Blvd. Reseda, CA

FM-07-109

CREATED BY: TNT

FrameMax, Inc.
13915 Danielson St
Suite 100
Poway, CA 92064
www.framemax.com

FRAME MAX

© FrameMax Inc.

HEIGHT : 10'-6" POINTS: 7.13 Points.

SPACING : 5000"

1st STUD: 5000"

WEIGHTS :

FRAME : 811 lbs

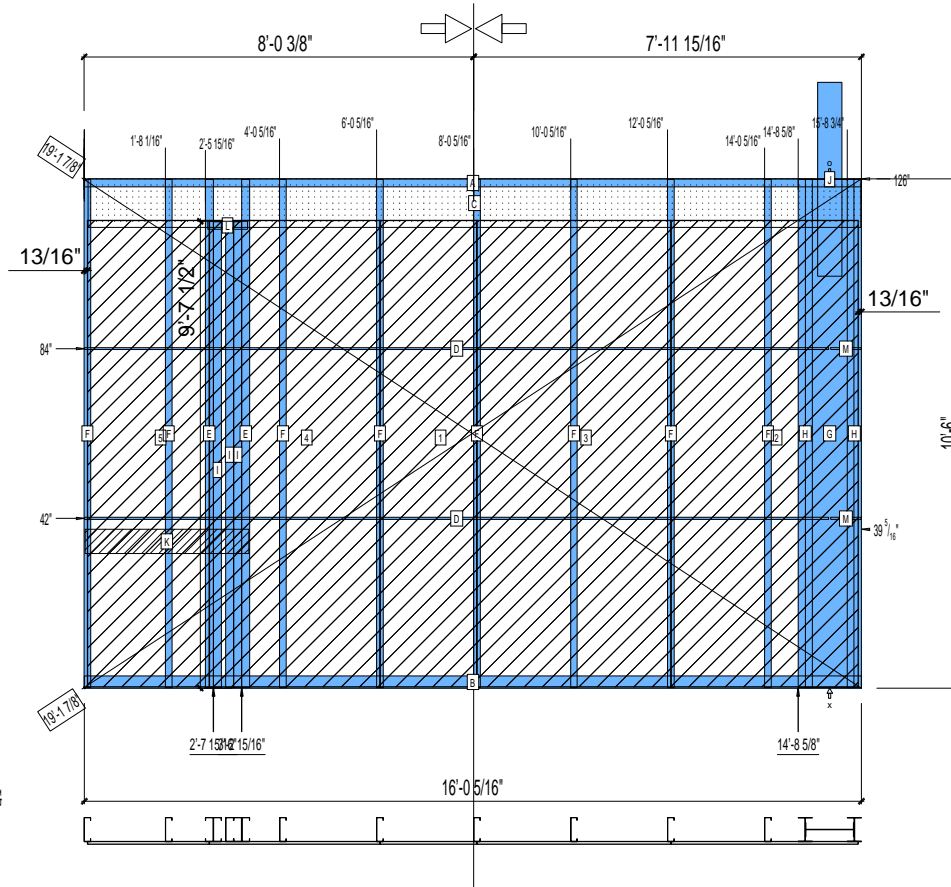
SHEATHING: 563 lbs

TOTAL: 1374 lbs

APPROVED

By TNT at 2:31 pm, Dec 05, 2008

SPLIT HERE



PIECES LIST

LABEL	QTY	SIZE	LENGTH	USE
A	1	600T200-68	16'-0 5/16"	TOP TRACK
B	1	600T300-68	16'-0 5/16"	BOTTOM TRACK
C	1	1200D-54	15'-11 1/4"	STRAP
D	2	150U50-54	15'-4 1/8"	HORIZONTAL BRACING
E	2	600S200-97	10'-5 13/16"	BEAM KING
F	8	600S162-68	10'-5 13/16"	STUD
G	1	1200i350p1062	10'-5 13/16"	PACO
H	2	600i350p680	10'-5 13/16"	PACO
I	3	600S200-68	9'-7 5/16"	BEAM JACK
J	1	C	4'-0"	HOLDDOWN
K	1	600D-54	3'-4 1/2"	VANITY BACKING
L	1	600T200-68	9 13/16"	BEAM JACK
M	2	150U50-54	7 1/2"	HORIZONTAL BRACING

SHEATHING

LABEL	QTY	CODE	THICK	SIZE	SCREWS
1	1	SB-DENSARMOR	5/8"	2'-0" X 9'-7 7/16"	3-12
2	1	SB-DENSARMOR	5/8"	3'-10 5/16" X 9'-7 7/16"	3-12
3	1	SB-DENSARMOR	5/8"	4'-0" X 9'-7 7/16"	3-12
4	1	SB-DENSARMOR	5/8"	3'-6 3/16" X 9'-7 7/16"	3-12
5	1	SB-DENSARMOR	5/8"	2'-6 1/8" X 9'-7 7/16"	3-12