

22-1112

Jewish Home for the Aging

1885 Victory Blvd. Reseda, CA

CREATED: 11/11/2008

FM-07-109

CREATED BY: TNT

FrameMax, Inc.
13915 Danielson St
Suite 100
Poway, CA 92064
www.framemax.com

FRAME MAX

© FrameMax Inc.

APPROVED

By TNT at 2:33 pm, Dec 05, 2008

HEIGHT : 11'-2 7/8" POINTS: 6.73 Points.

SPACING : 5000"

1st STUD: 16"

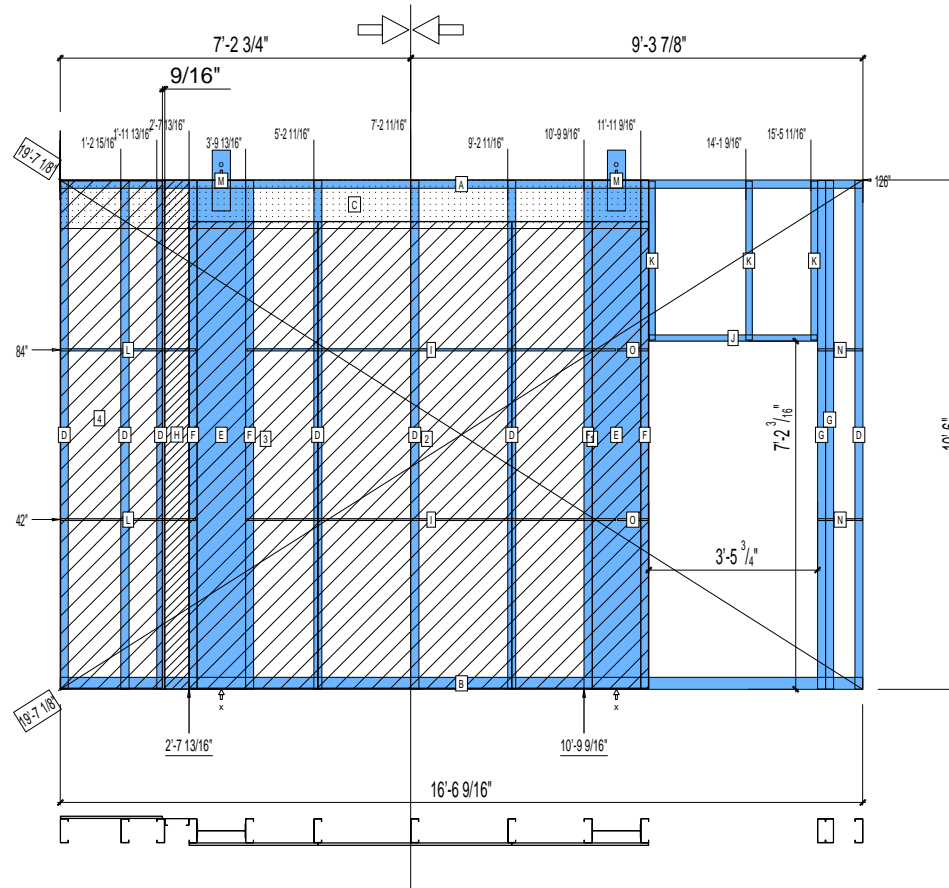
WEIGHTS :

FRAME : 861 lbs

SHEATHING: 391 lbs

TOTAL: 1252 lbs

SPLIT HERE



PIECES LIST

LABEL	QTY	SIZE	LENGTH	USE
A	1	600T200-68	16'-6 9/16"	TOP TRACK
B	1	600T300-68	16'-6 9/16"	BOTTOM TRACK
C	1	1200D-54	12'-1 1/2"	STRAP
D	7	600S200-97	10'-5 13/16"	STUD
E	2	1200i350p1062	10'-5 13/16"	PACO
F	4	600S200-68	10'-5 13/16"	STUD
G	2	600S200-97	10'-5 13/16"	KING STUD
H	1	600S162-33	10'-5 13/16"	BACKER-U
I	2	150U50-54	7'-7 3/16"	HORIZONTAL BRACING
J	1	600T150-54	3'-5 1/2"	HEAD TRACK
K	3	600S162-54	3'-3 3/8"	CRIPPLE
L	2	150U50-54	2'-9 7/16"	HORIZONTAL BRACING
M	2	A	1'-3"	HOLDDOWN
N	2	150U50-54	11"	HORIZONTAL BRACING
O	2	150U50-54	7 5/8"	HORIZONTAL BRACING

SHEATHING

LABEL	QTY	CODE	THICK	SIZE	SCREWS
1	1	SB-DENSARMOR	5/8"	2'-9 7/8" X 9'-7 7/16"	3-12
2	1	SB-DENSARMOR	5/8"	4'-0" X 9'-7 7/16"	3-12
3	1	SB-DENSARMOR	5/8"	2'-7 13/16" X 9'-7 7/16"	3-12
4	1	DENSGLOSS	1/2"	2'-1 1/4" X 10'-5 9/16"	8 - 12