

22-1116

CREATED: 11/11/2008

Jewish Home for the Aging

1885 Victory Blvd. Reseda, CA

FM-07-109

CREATED BY: TNT

FrameMax, Inc.
13915 Danielson St
Suite 100
Poway, CA 92064
www.framemax.com

FRAME MAX

© FrameMax Inc.

HEIGHT : 11'-2 7/8" POINTS: 5.61 Points.

SPACING : 5000"

1st STUD: 5000"

APPROVED

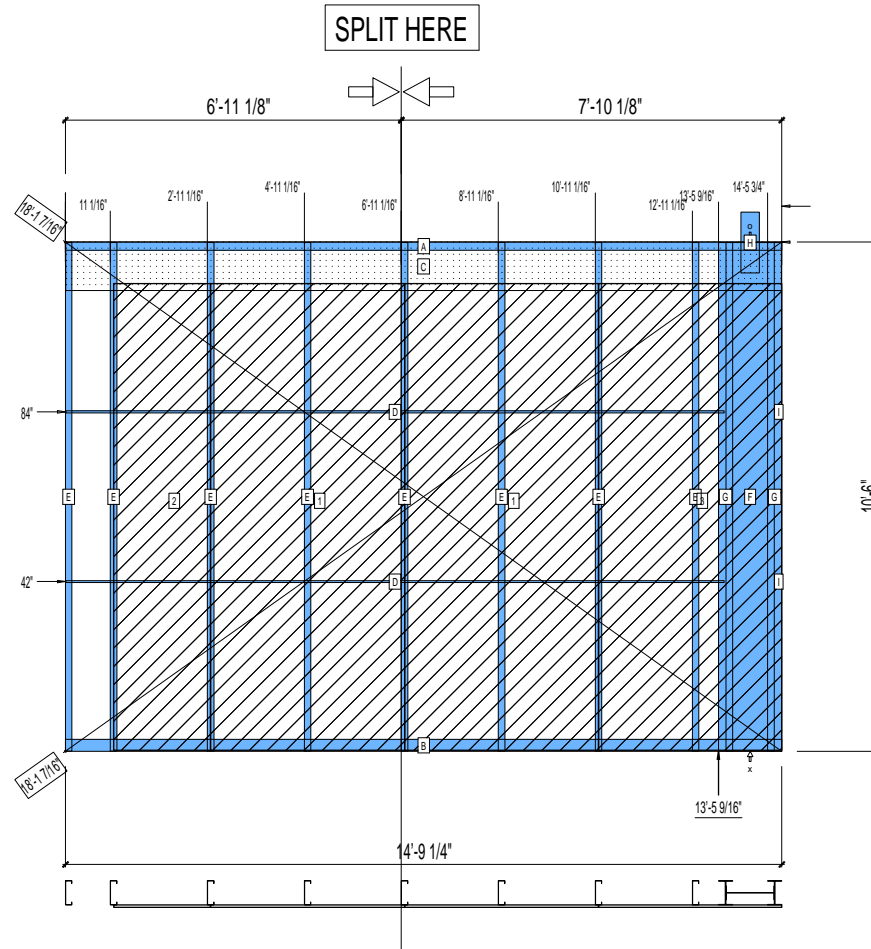
By TNT at 2:33 pm, Dec 05, 2008

WEIGHTS :

FRAME : 591 lbs

SHEATHING: 488 lbs

TOTAL: 1079 lbs



PIECES LIST

| LABEL | QTY | SIZE | LENGTH | USE |
|-------|-----|---------------|--------------|--------------------|
| A | 1 | 600T200-68 | 14'-9 1/4" | TOP TRACK |
| B | 1 | 600T300-68 | 14'-9 1/4" | BOTTOM TRACK |
| C | 1 | 1200D-54 | 14'-9 1/8" | STRAP |
| D | 2 | 150U50-54 | 13'-6 15/16" | HORIZONTAL BRACING |
| E | 8 | 600S162-68 | 10'-5 13/16" | STUD |
| F | 1 | 1200i350p1062 | 10'-5 13/16" | PACO |
| G | 2 | 600i350p680 | 10'-5 13/16" | PACO |
| H | 1 | A | 1'-3" | HOLDDOWN |
| I | 2 | 150U50-54 | 1 3/8" | HORIZONTAL BRACING |

SHEATHING

| LABEL | QTY | CODE | THICK | SIZE | SCREWS |
|-------|-----|--------------|-------|-------------------------|--------|
| 1 | 2 | SB-DENSARMOR | 5/8" | 4'-0" X 9'-7 7/16" | 3-12 |
| 2 | 1 | SB-DENSARMOR | 5/8" | 2'-0" X 9'-7 7/16" | 3-12 |
| 3 | 1 | SB-DENSARMOR | 5/8" | 3'-9 5/16" X 9'-7 7/16" | 3-12 |