

22-1117

Jewish Home for the Aging

1885 Victory Blvd. Reseda, CA

FrameMax, Inc.  
13915 Danielson St  
Suite 100  
Poway, CA 92064  
www.frame-max.com

FRAME MAX

© FrameMax Inc.

CREATED: 11/11/2008

FM-07-109

CREATED BY: TNT

HEIGHT : 11'-2 7/8" POINTS: 5.78 Points.

SPACING : 5000"

1st STUD: 5000"

APPROVED

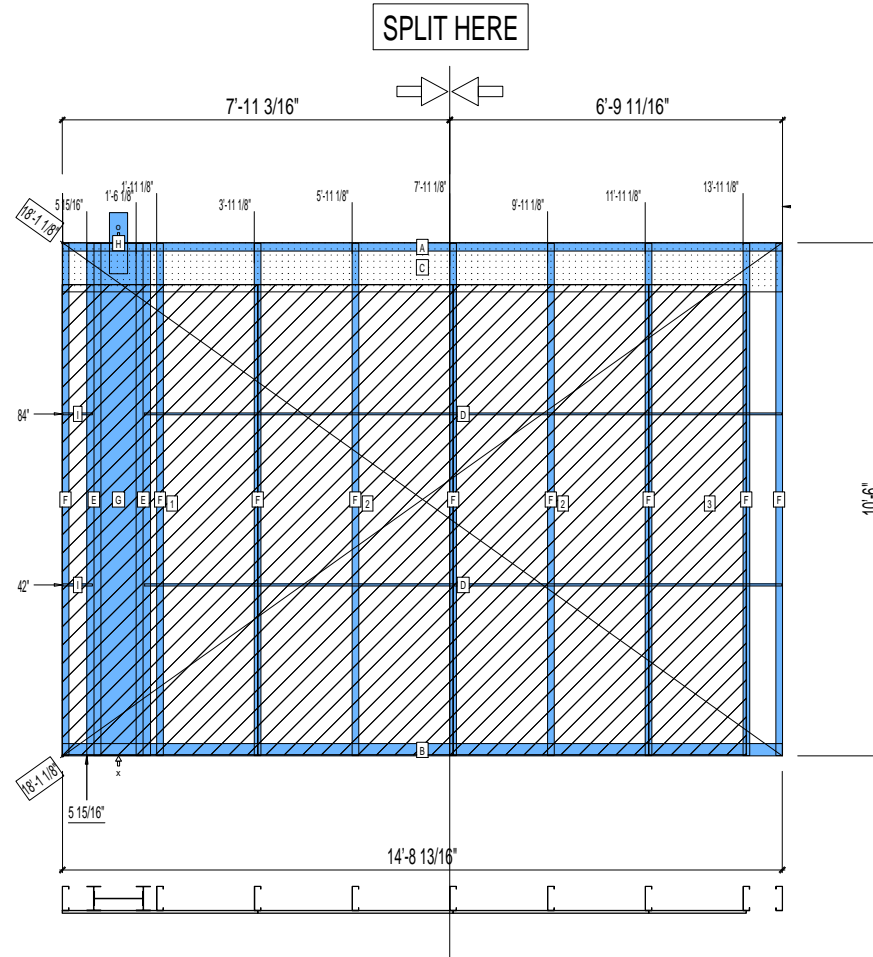
By TNT at 2:34 pm, Dec 05, 2008

WEIGHTS :

FRAME : 615 lbs

SHEATHING: 496 lbs

TOTAL: 1111 lbs



PIECES LIST

LABEL	QTY	SIZE	LENGTH	USE
A	1	600T200-68	14'-8 13/16"	TOP TRACK
B	1	600T300-68	14'-8 13/16"	BOTTOM TRACK
C	1	1200D-54	14'-8 3/4"	STRAP
D	2	150U50-54	13'-0 1/2"	HORIZONTAL BRACING
E	2	600i350p680	10'-5 13/16"	PACO
F	9	600S162-68	10'-5 13/16"	STUD
G	1	1200i350p1062	10'-5 13/16"	PACO
H	1	A	1'-3"	HOLDDOWN
I	2	150U50-54	7 5/16"	HORIZONTAL BRACING

SHEATHING

LABEL	QTY	CODE	THICK	SIZE	SCREWS
1	1	SB-DENSARMOR	5/8"	4'-0" X 9'-7 7/16"	2-12
2	2	SB-DENSARMOR	5/8"	4'-0" X 9'-7 7/16"	2-12
3	1	SB-DENSARMOR	5/8"	2'-0" X 9'-7 7/16"	2-12