

22-1119

Jewish Home for the Aging

1885 Victory Blvd. Reseda, CA

FrameMax, Inc.
13915 Danielson St
Suite 100
Poway, CA 92064
www.framemax.com

FRAME MAX

© FrameMax Inc.

CREATED: 11/11/2008

FM-07-109

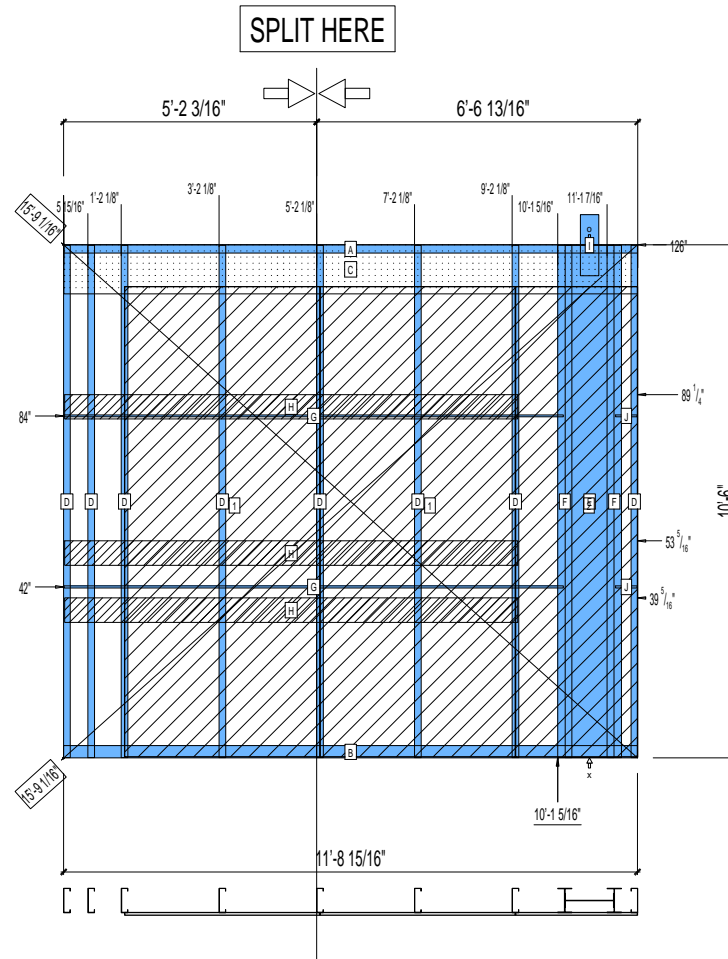
CREATED BY: TNT

HEIGHT : 11'-2 7/8" POINTS: 5.11 Points.
SPACING : 5000"
1st STUD: 5000"

APPROVED
By TNT at 2:34 pm, Dec 05, 2008

WEIGHTS :
FRAME : 597 lbs
SHEATHING: 371 lbs

TOTAL: 968 lbs



PIECES LIST

LABEL	QTY	SIZE	LENGTH	USE
A	1	600T200-68	11'-8 15/16"	TOP TRACK
B	1	600T300-68	11'-8 15/16"	BOTTOM TRACK
C	1	1200D-54	11'-8 7/8"	STRAP
D	8	600S162-68	10'-5 13/16"	STUD
E	1	1200i350p1062	10'-5 13/16"	PACO
F	2	600i350p680	10'-5 13/16"	PACO
G	2	150U50-54	10'-2 5/8"	HORIZONTAL BRACING
H	3	600D-54	9'-3 5/16"	KITCHEN BACKING
I	1	A	1'-3"	HOLDDOWN
J	2	150U50-54	5 5/16"	HORIZONTAL BRACING

SHEATHING

LABEL	QTY	CODE	THICK	SIZE	SCREWS
1	2	SB-DENSARMOR	5/8"	3'-11 15/16" X 9'-7 7/16"	2-12
2	1	SB-DENSARMOR	5/8"	2'-5 15/16" X 9'-7 7/16"	2-12