

22-1128

CREATED: 11/12/2008

Jewish Home for the Aging

1885 Victory Blvd. Reseda, CA

FM-07-109

CREATED BY: TNT

FrameMax, Inc.
13915 Danielson St
Suite 100
Poway, CA 92064
www.framemax.com

FRAME MAX

© FrameMax Inc.

APPROVED

By TNT at 2:35 pm, Dec 05, 2008

HEIGHT : 10'-6" POINTS: 7.27 Points.

SPACING : 5000"

1st STUD: 5000"

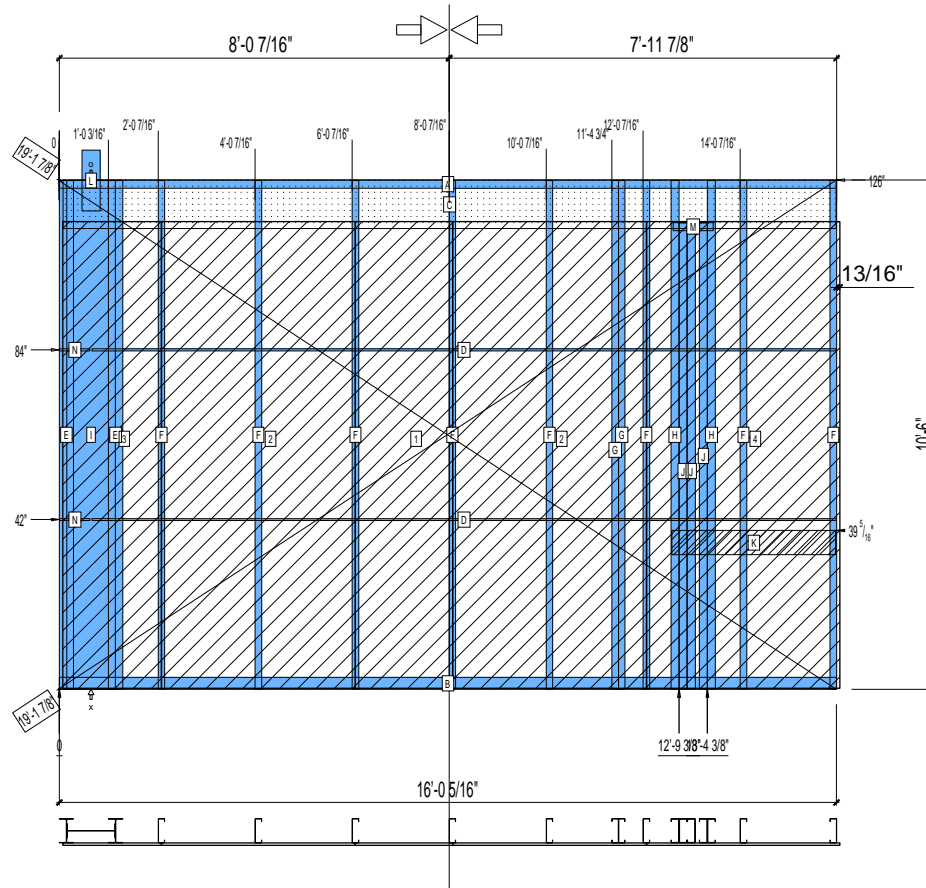
WEIGHTS :

FRAME : 829 lbs

SHEATHING: 567 lbs

TOTAL: 1396 lbs

SPLIT HERE



PIECES LIST

LABEL	QTY	SIZE	LENGTH	USE
A	1	600T200-68	16'-0 5/16"	TOP TRACK
B	1	600T300-68	16'-0 5/16"	BOTTOM TRACK
C	1	1200D-54	15'-11 1/4"	STRAP
D	2	150U50-54	15'-4 1/8"	HORIZONTAL BRACING
E	2	600i350p680	10'-5 13/16"	PACO
F	8	600S162-68	10'-5 13/16"	STUD
G	2	600S162-54	10'-5 13/16"	EXTRA STUD
H	2	600S200-97	10'-5 13/16"	BEAM KING
I	1	1200i350p1062	10'-5 13/16"	PACO
J	3	600S200-97	9'-7 5/16"	BEAM JACK
K	1	600D-54	3'-4 1/2"	VANITY BACKING
L	1	A	1'-3"	HOLDDOWN
M	1	600T200-68	9 13/16"	BEAM JACK
N	2	150U50-54	7 1/2"	HORIZONTAL BRACING

SHEATHING

LABEL	QTY	CODE	THICK	SIZE	SCREWS
1	1	SB-DENSARMOR	5/8"	2'-0 1/16" X 9'-7 7/16"	2-12
2	2	SB-DENSARMOR	5/8"	4'-0" X 9'-7 7/16"	2-12
3	1	SB-DENSARMOR	5/8"	2'-0 3/8" X 9'-7 7/16"	2-12
4	1	SB-DENSARMOR	5/8"	3'-11 13/16" X 9'-7 7/16"	2-12