

# 22-1173

Jewish Home for the Aging

1885 Victory Blvd. Reseda, CA

FM-07-109

CREATED BY: TNT

FrameMax, Inc.  
13915 Danielson St  
Suite 100  
Poway, CA 92064  
www.frame-max.com

# FRAME MAX

© FrameMax Inc.

HEIGHT : 10'-6" POINTS: 7.40 Points.

SPACING : 5000"

1st STUD: 16"

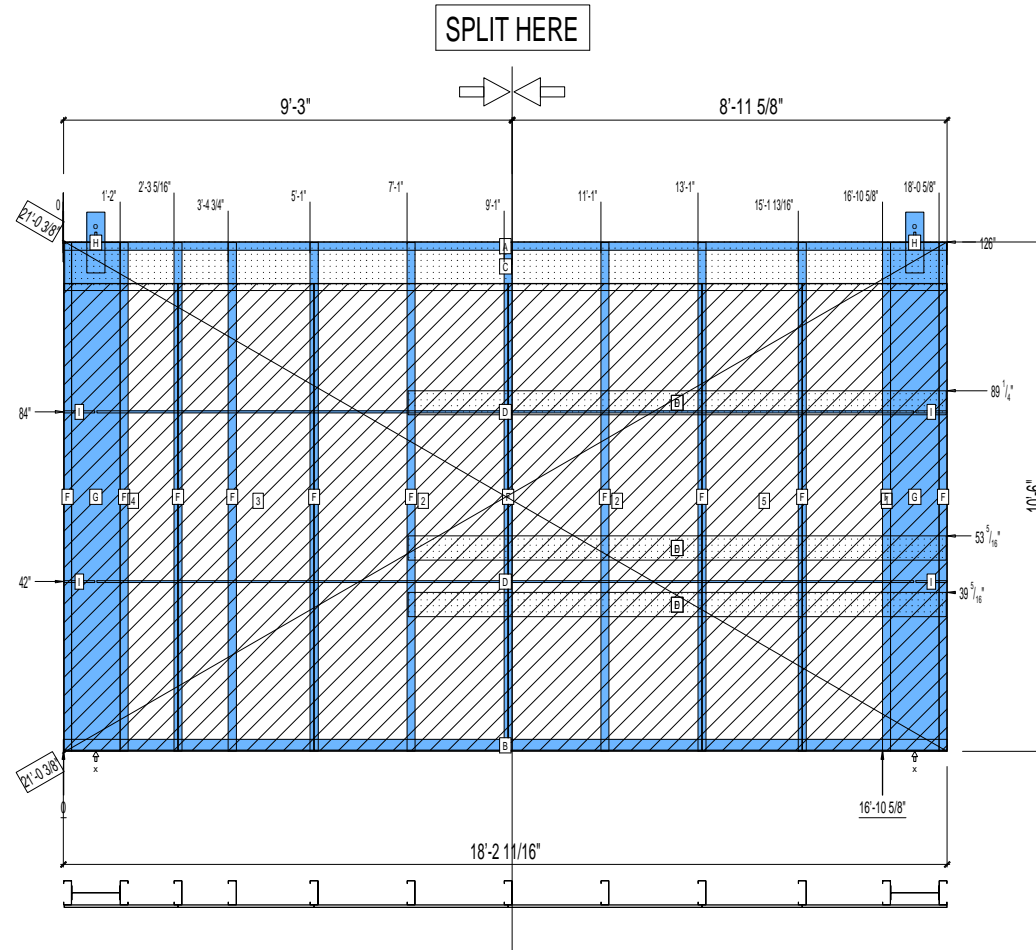
**APPROVED**  
By TNT at 2:36 pm, Dec 05, 2008

WEIGHTS :

FRAME : 769 lbs

SHEATHING: 645 lbs

TOTAL: 1414 lbs



## PIECES LIST

LABEL	QTY	SIZE	LENGTH	USE
A	1	600T200-68	18'-2 11/16"	TOP TRACK
B	1	600T300-68	18'-2 11/16"	BOTTOM TRACK
C	1	1200D-54	18'-2 1/4"	STRAP
D	2	150U50-54	16'-10 1/8"	HORIZONTAL BRACING
E	3	600D-54	11'-1 3/16"	KITCHEN BACKING
F	12	600S200-68	10'-5 13/16"	STUD
G	2	1200i350p1062	10'-5 13/16"	PACO
H	2	A	1'-3"	HOLDDOWN
I	4	150U50-54	7 11/16"	HORIZONTAL BRACING

## SHEATHING

LABEL	QTY	CODE	THICK	SIZE	SCREWS
1	1	SB-DENSARMOR	5/8"	2'-11 13/16" X 9'-7 7/16"	3-12
2	2	SB-DENSARMOR	5/8"	4'-0" X 9'-7 7/16"	3-12
3	1	SB-DENSARMOR	5/8"	2'-9 11/16" X 9'-7 7/16"	3-12
4	1	SB-DENSARMOR	5/8"	2'-4 3/16" X 9'-7 7/16"	3-12
5	1	SB-DENSARMOR	5/8"	2'-0 3/4" X 9'-7 7/16"	3-12