

22-1191

Jewish Home for the Aging

1885 Victory Blvd. Reseda, CA

FM-07-109

CREATED BY: TNT

FrameMax, Inc.
13915 Danielson St
Suite 100
Poway, CA 92064
www.frame-max.com

FRAME MAX

© FrameMax Inc.

HEIGHT : 11'-2 7/8" POINTS: 6.10 Points.

SPACING : 5000"

1st STUD: 5000"

WEIGHTS :

FRAME : 669 lbs

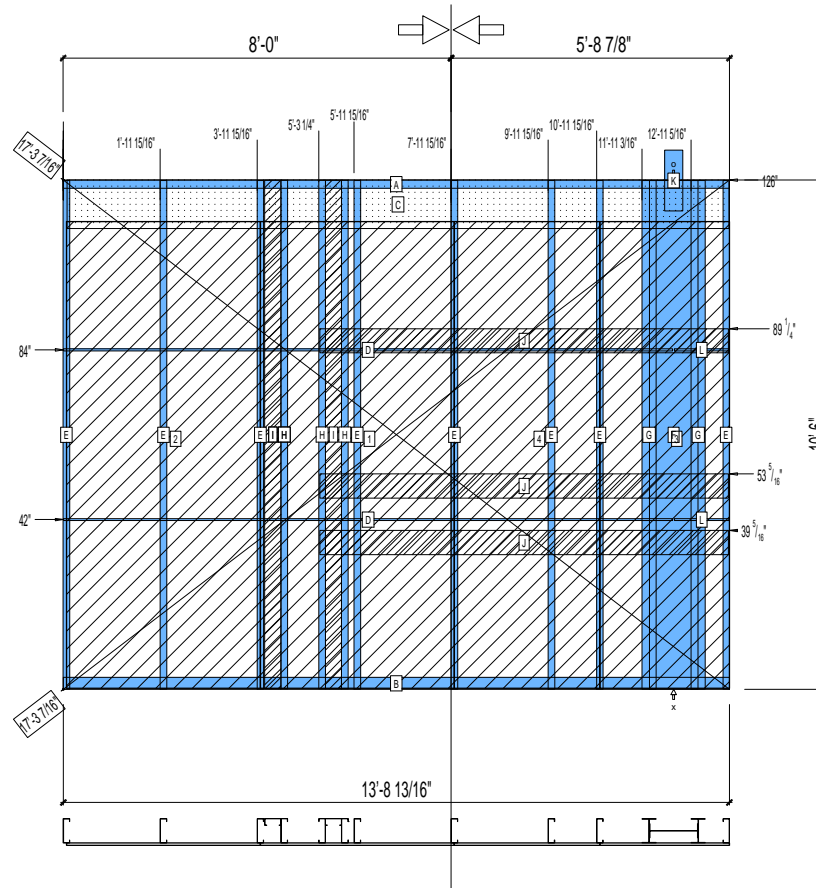
SHEATHING: 484 lbs

TOTAL: 1153 lbs

APPROVED

By TNT at 2:37 pm, Dec 05, 2008

SPLIT HERE



PIECES LIST

| LABEL | QTY | SIZE | LENGTH | USE |
|-------|-----|---------------|--------------|--------------------|
| A | 1 | 600T200-68 | 13'-8 13/16" | TOP TRACK |
| B | 1 | 600T300-68 | 13'-8 13/16" | BOTTOM TRACK |
| C | 1 | 1200D-54 | 13'-7 13/16" | STRAP |
| D | 2 | 150U50-54 | 12'-6 11/16" | HORIZONTAL BRACING |
| E | 8 | 600S162-68 | 10'-5 13/16" | STUD |
| F | 1 | 1200i350p1062 | 10'-5 13/16" | PACO |
| G | 2 | 600i350p680 | 10'-5 13/16" | PACO |
| H | 3 | 600S162-33 | 10'-5 13/16" | BACKER STUD |
| I | 2 | 400S162-33 | 10'-5 13/16" | BACKER-U |
| J | 3 | 600D-54 | 8'-5 1/8" | KITCHEN BACKING |
| K | 1 | A | 1'-3" | HOLDDOWN |
| L | 2 | 150U50-54 | 1'-1 7/16" | HORIZONTAL BRACING |

SHEATHING

| LABEL | QTY | CODE | THICK | SIZE | SCREWS |
|-------|-----|--------------|-------|---------------------------|--------|
| 1 | 1 | SB-DENSARMOR | 5/8" | 4'-0" X 9'-7 7/16" | 2-12 |
| 2 | 1 | SB-DENSARMOR | 5/8" | 3'-11 15/16" X 9'-7 7/16" | 2-12 |
| 3 | 1 | SB-DENSARMOR | 5/8" | 2'-8 1/16" X 9'-7 7/16" | 2-12 |
| 4 | 1 | SB-DENSARMOR | 5/8" | 3'-0" X 9'-7 7/16" | 2-12 |