

# 21-1300

Jewish Home for the Aging

1885 Victory Blvd. Reseda, CA

FrameMax, Inc.  
13915 Danielson St  
Suite 100  
Poway, CA 92064  
www.frame-max.com



© FrameMax Inc.

CREATED: 09/26/2008

FM-07-109

CREATED BY: TNT

HEIGHT : 11'-9 11/16" POINTS: 3.64 Points.

SPACING : 5000"

1st STUD: 5000"

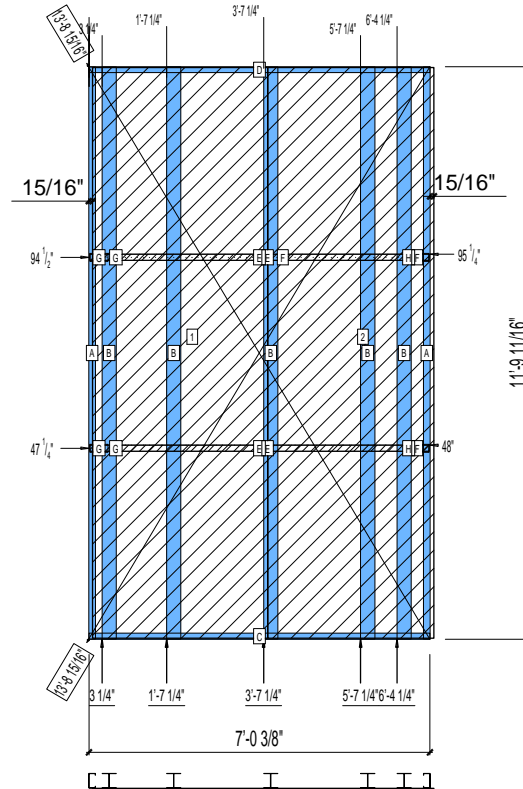
**APPROVED**  
By TNT at 10:30 am, Dec 10, 2008

WEIGHTS :

FRAME : 385 lbs

SHEATHING: 305 lbs

TOTAL: 690 lbs



**REPLACED SHEATHING TO SB-DENSGLASS**

PIECES LIST

LABEL	QTY	SIZE	LENGTH	USE
A	2	362S162-54	11'-9 9/16"	STUD
B	5	363I350p554	11'-9 9/16"	PACO COLUMN
C	1	362T150-68	7'-0 3/8"	BOTTOM TRACK
D	1	362T150-68	7'-0 3/8"	TOP TRACK
E	4	150D-43	6'-11 15/16"	STRAP
F	2	362T200-68	5 15/16"	BLOCK
G	2	362T200-68	4 1/2"	BLOCK

SHEATHING

LABEL	QTY	CODE	THICK	SIZE	SCREWS
1	1	SB-DENSGLASS	1/2"	3'-7 5/16" X 11'-9 3/16"	2-12
2	1	SB-DENSGLASS	1/2"	3'-5 1/8" X 11'-9 3/16"	2-12