

21-1328

Jewish Home for the Aging

1885 Victory Blvd. Reseda, CA

FrameMax, Inc.
13915 Danielson St
Suite 100
Poway, CA 92064
www.frame-max.com



© FrameMax Inc.

CREATED: 09/26/2008

FM-07-109

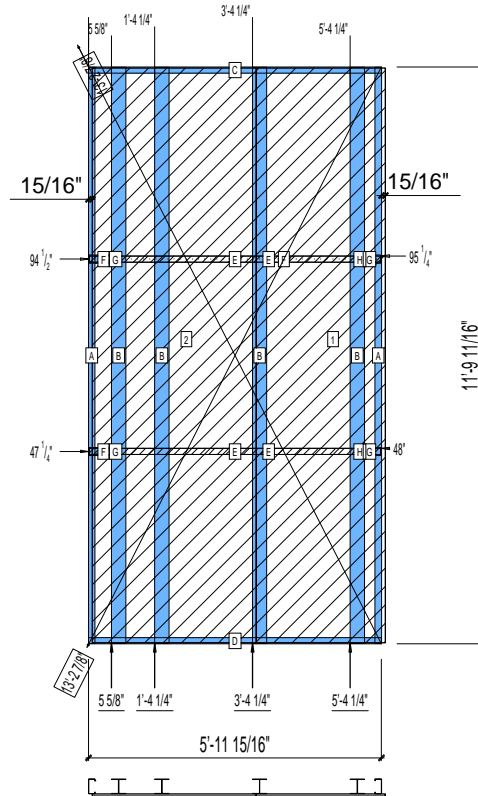
CREATED BY: TNT

HEIGHT : 11'-9 11/16" POINTS: 3.09 Points.
SPACING : 5000"
1st STUD: 5000"

APPROVED
By TNT at 10:30 am, Dec 10, 2008

WEIGHTS :
FRAME : 317 lbs
SHEATHING: 260 lbs

TOTAL: 577 lbs



REPLACED SHEATHING TO SB-DENSGLOSS

PIECES LIST

LABEL	QTY	SIZE	LENGTH	USE
A	2	362S162-54	11'-9 9/16"	STUD
B	4	3631350p554	11'-9 9/16"	PACO. COLUMN
C	1	362T150-68	5'-11 15/16"	TOP TRACK
D	1	362T150-68	5'-11 15/16"	BOTTOM TRACK
E	4	150D-43	5'-11 1/2"	STRAP
F	2	362T200-68	6 15/16"	BLOCK
G	2	362T200-68	5 7/16"	BLOCK

SHEATHING

LABEL	QTY	CODE	THICK	SIZE	SCREWS
1	1	SB-DENSGLOSS	1/2"	2'-7 3/4" X 11'-9 3/16"	2-12
2	1	SB-DENSGLOSS	1/2"	3'-4 1/4" X 11'-9 3/16"	2-12