

22-1199

Jewish Home for the Aging

1885 Victory Blvd. Reseda, CA

FrameMax, Inc.
13915 Danielson St
Suite 100
Poway, CA 92064
www.frame-max.com



© FrameMax Inc.

CREATED: 11/11/2008

FM-07-109

CREATED BY: TNT

HEIGHT : 10'-6"
SPACING : 5000"
1st STUD: 5000"

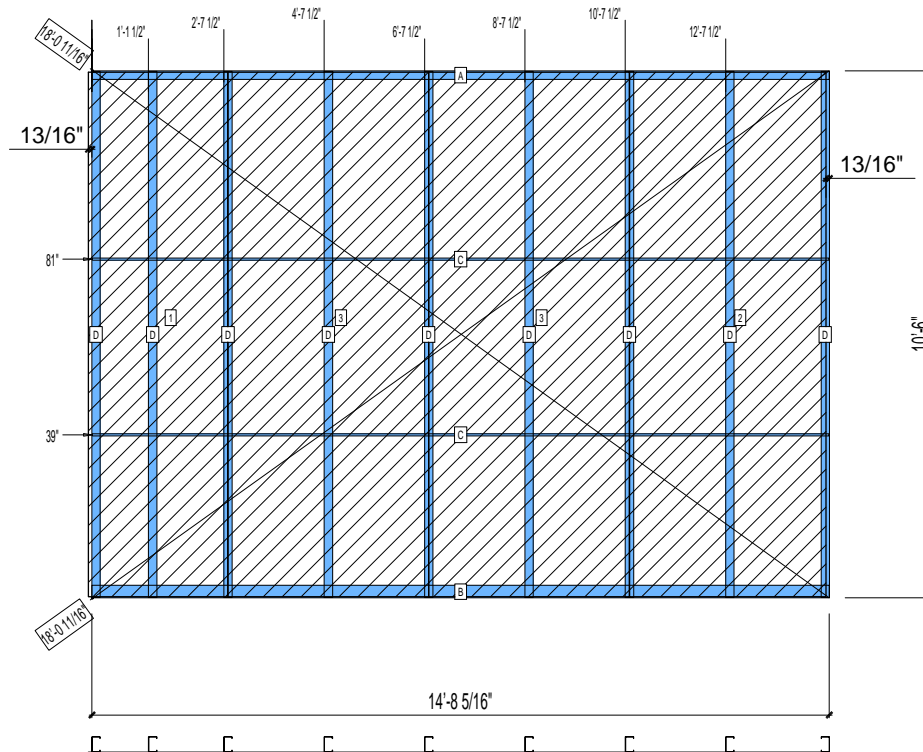
POINTS: 4.37 Points.

APPROVED
By TNT at 10:10 am, Dec 10, 2008

WEIGHTS :
FRAME : 268 lbs
SHEATHING: 565 lbs

TOTAL: 833 lbs

**PANEL SHEATHING REVISED FROM
DENSGLOSS TO SB-DENSGLOSS**



PIECES LIST

| LABEL | QTY | SIZE | LENGTH | USE |
|-------|-----|------------|--------------|--------------------|
| A | 1 | 362T200-68 | 14'-8 5/16" | TOP TRACK |
| B | 1 | 362T300-68 | 14'-8 5/16" | BOTTOM TRACK |
| C | 2 | 150U50-54 | 14'-8 1/8" | HORIZONTAL BRACING |
| D | 9 | 362S200-68 | 10'-5 13/16" | STUD |

SHEATHING

| LABEL | QTY | CODE | THICK | SIZE | SCREWS |
|-------|-----|--------------|-------|-------------------------|--------|
| 1 | 1 | SB-DENSGLOSS | 1/2" | 2'-9 3/8" X 10'-5 7/16" | 2-12 |
| 2 | 1 | SB-DENSGLOSS | 1/2" | 3'-11" X 10'-5 7/16" | 2-12 |
| 3 | 2 | SB-DENSGLOSS | 1/2" | 4'-0" X 10'-5 7/16" | 2-12 |