

# 22-6146

Jewish Home for the Aging

1885 Victory Blvd. Reseda, CA

FrameMax, Inc.  
13915 Danielson St  
Suite 100  
Poway, CA 92064  
www.frame-max.com



© FrameMax Inc.

CREATED: 12/02/2008

FM-07-109

CREATED BY: TNT

HEIGHT : 10'-6"      POINTS: 3.05 Points.

SPACING : 24"

1st STUD: 24"

**APPROVED**

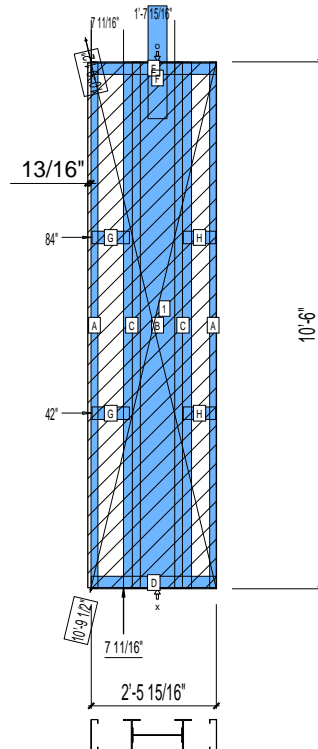
By TNT at 10:10 am, Dec 10, 2008

WEIGHTS :

FRAME : 505 lbs

SHEATHING: 99 lbs

-----  
TOTAL: 604 lbs



**PANEL SHEATHING REVISED FROM DENSGLASS TO SB-DENSGLOSS**

PIECES LIST

LABEL	QTY	SIZE	LENGTH	USE
A	2	750S162-54	10'-5 13/16"	STUD
B	1	1200i350p1420	10'-5 13/16"	PACO
C	2	750i400p1268	10'-5 13/16"	PACO
D	1	750T300-68	2'-5 15/16"	BOTTOM TRACK
E	1	750T300-68	2'-5 15/16"	TOP TRACK
F	1	B	2'-3"	HOLDDOWN
G	2	750T300-68	8 15/16"	BLOCK
H	2	750T300-68	7 3/4"	BLOCK

SHEATHING

LABEL	QTY	CODE	THICK	SIZE	SCREWS
1	1	SB-DENSGLOSS	1/2"	2'-6 3/4" X 10'-5 7/16"	2-12