

22-6155

Jewish Home for the Aging

1885 Victory Blvd. Reseda, CA

FrameMax, Inc.
13915 Danielson St
Suite 100
Poway, CA 92064
www.frame-max.com



© FrameMax Inc.

CREATED: 12/02/2008

FM-07-109

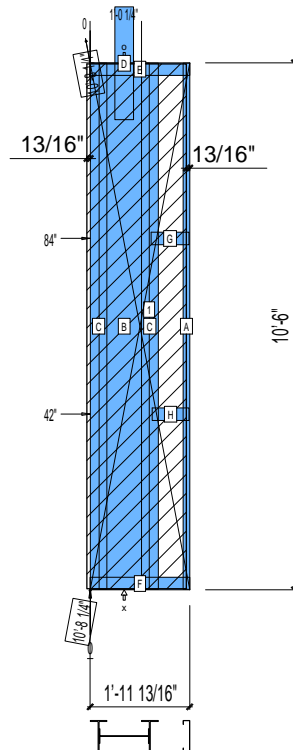
CREATED BY: TNT

HEIGHT : 10'-6"
POINTS: 2.73 Points.
SPACING : 24"
1st STUD: 24"

APPROVED
By TNT at 10:10 am, Dec 10, 2008

WEIGHTS :
FRAME : 474 lbs
SHEATHING: 76 lbs

TOTAL: 550 lbs



**PANEL SHEATHING REVISED FROM
DENSGLOSS TO SB-DENSGLOSS**

PIECES LIST

LABEL	QTY	SIZE	LENGTH	USE
A	1	750S162-54	10'-5 13/16"	STUD
B	1	1200i350p1420	10'-5 13/16"	PACO
C	2	750i400p1268	10'-5 13/16"	PACO
D	1	B	2'-3"	HOLDDOWN
E	1	750T300-68	1'-11 13/16"	TOP TRACK
F	1	750T300-68	1'-11 13/16"	BOTTOM TRACK
G	1	750T300-68	9 1/16"	BLOCK
H	1	750T300-68	8 3/4"	BLOCK

SHEATHING					
LABEL	QTY	CODE	THICK	SIZE	SCREWS
1	1	SB-DENSGLOSS	1/2"	1'-11 13/16" X 10'-5 7/16"	2-12