

FIELD SCREWING  
@ FIELD STUD  
Tornillos en campo

EDGE SCREWING  
@ EDGES  
Tornillos en las orillas

EDGE SCREWING  
@ SEAMS  
Tornillos en las uniones

EDGE SCREWING  
@ SEAMS  
Tornillos en las uniones

EDGE SCREWING  
@ EDGES  
Tornillos en las orillas

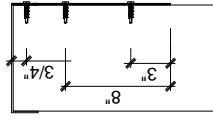
EDGE SCREWING  
@ EDGES OF STRAP  
Tornillos a las orillas del trap

EDGE SCREWING  
@ SUREBOARD EDGE TO STRAP  
Tornillos en la orilla del sureboard

FASTENER SPECIFICATIONS FOR  
SB-DENSGLOSS, SB-DENSARMOR, AND  
DENSGLOSS ARE PROVIDED IN EACH  
SHOP DRAWING.

One (1) #8 Screw at 3" and 8" from  
Bottom of Strap into each Stud. Typical.

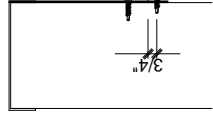
Un tornillo #8 a 3" y a 8" de la parte de  
abajo del strap de cada stud



Strap  
Attachment  
to Studs

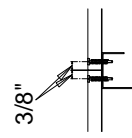
Start Edge Screws at 3/4" from  
Top of Sureboard. Typical.

Empezar a 3/4" de la orilla  
de arriba del Sureboard. Tipico

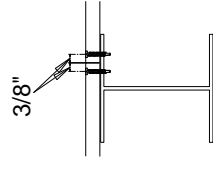


SureBoard  
Attachment  
to Strap  
Sujetar strap  
a la pared

EDGE  
SCREWING  
@ EDGES  
Tornillos en las orillas



SureBoard  
Edge Seams  
Separacion de 3/8"  
en las orillas



SEE SUREBOARD.PDF FOR OFFSET VALUES

REVISION	DATE
△	
△	
△	
△	

FrameMax, Inc.  
13915 Danielson Street  
Suite 100  
Poway, CA 92064  
Phone: 858 486-7200  
Fax: 909 486-7220  
www.frame-max.com



FM-07-109-JHA  
JEWISH HOME

JHA-1

# Sureboard / Shear Strap Attachment

