

12-1001

CREATED: 11/05/2008

Jewish Home for the Aging

1885 Victory Blvd. Reseda, CA

FM-07-109

CREATED BY: AMB

POINTS: 2.02 Points.

HEIGHT : 10'-6"
 SPACING : 5000"
 1st STUD: 5000"

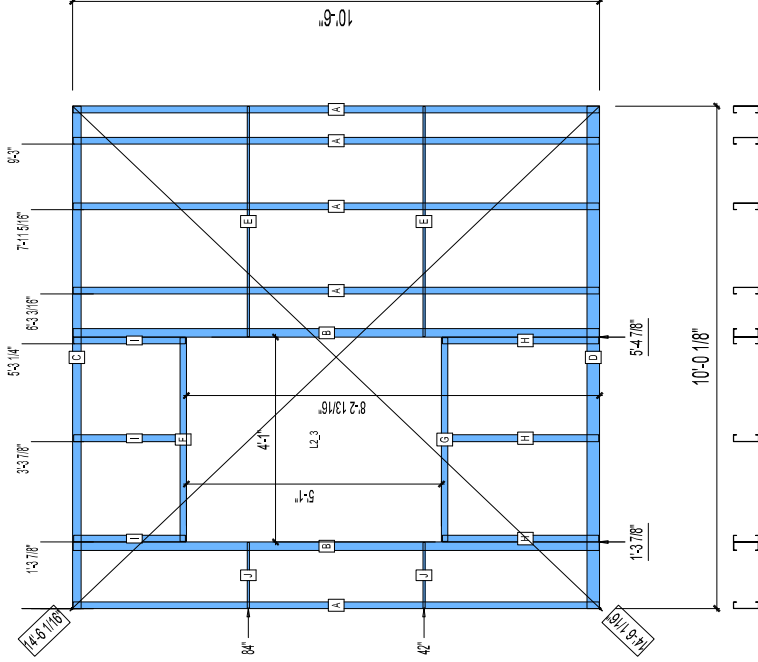
WEIGHTS :
 FRAME : 276 lbs
 SHEATHING: 24 lbs

 TOTAL: 300 lbs

FrameMax, Inc.
 13915 Danielson St
 Suite 100
 Poway, CA 92064
 www.frame-max.com

FRAME MAX

© FrameMax Inc



**BUNDLE AND
 SHIP TO SITE**

PIECES LIST LABEL	QTY	SIZE	LENGTH	USE
A	5	600S162-54	10'-5 13/16"	STUD
B	2	600S200-97	10'-5 13/16"	KING STUD
C	1	600T200-54	10'-0 1/8"	TOP TRACK
D	1	600T300-54	10'-0 1/8"	BOTTOM TRACK
E	2	1500U50-54	4'-7"	HORIZONTAL BRACING
F	1	600T150-54	4'-0 3/4"	HEAD TRACK
G	1	600T150-54	4'-0 3/4"	SILL
H	3	600S162-54	3'-1 3/8"	CRIPPLE
I	3	600S162-54	2'-2 3/4"	CRIPPLE
J	2	1500U50-54	1'-3 11/16"	HORIZONTAL BRACING

SHEATHING LABEL	QTY	CODE	THICK	SIZE	SCREWS
1	2	DENSGLOSS	1/2"	6 3/8" X	5'-0 1/2" 8 - 12
2	1	DENSGLOSS	1/2"	4'-0 7/8" X	6 5/16" 8 - 12
3	1	DENSGLOSS	1/2"	4'-0 1/4" X	6 5/16" 8 - 12