

12-1006

Jewish Home for the Aging

1885 Victory Blvd. Reseda, CA

CREATED: 11/05/2008

FM-07-09

CREATED BY: AMB

HEIGHT : 10'-6"

SPACING : 5000"

1st STUD: 5000"

WEIGHTS :

FRAME : 439 lbs

SHEATHING: 59 lbs

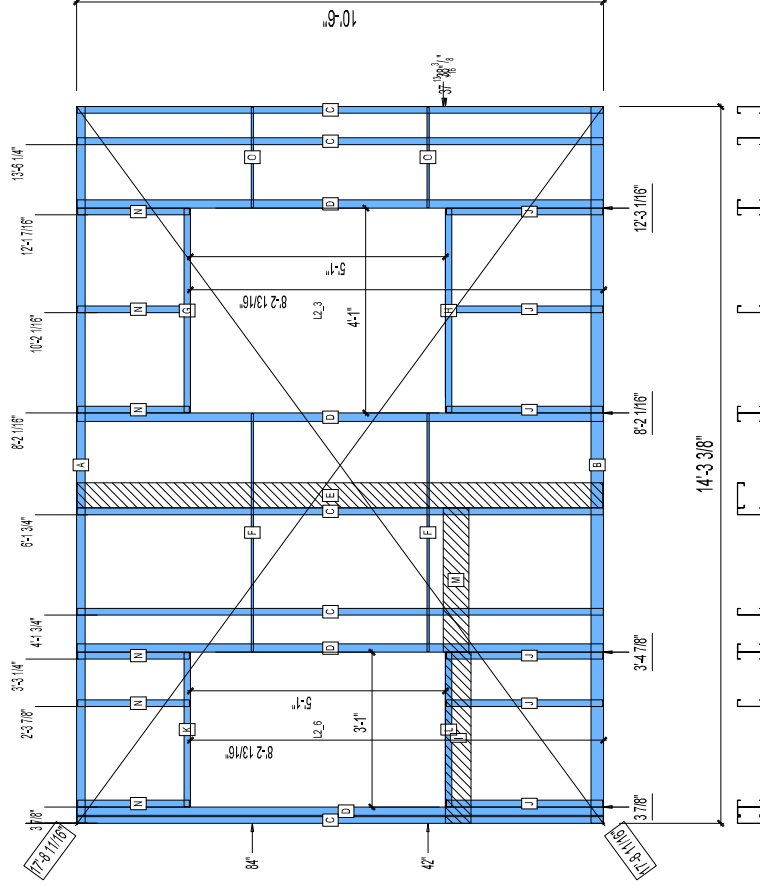
TOTAL: 498 lbs

POINTS: 3.29 Points.

FrameMax, Inc.
13915 Danielson St
Suite 100
Poway, CA 92064
www.frame-max.com

FRAME MAX

© FrameMax Inc.



**BUNDLE AND
SHIP TO SITE**

PIECES LIST LABEL	QTY	SIZE	LENGTH	USE
A	1	600T200-54	14'-3 3/8"	TOP TRACK
B	1	600T300-54	14'-3 3/8"	BOTTOM TRACK
C	5	600S162-54	10'-5 13/16"	STUD
D	4	600S200-97	10'-5 13/16"	KING STUD
E	1	600S162-33	10'-5 11/16"	BACKER-U
F	2	1500U50-54	4'-8 15/16"	HORIZONTAL BRACING
G	1	600T150-54	4'-0 3/4"	HEAD TRACK
H	1	600T150-54	4'-0 3/4"	SILL
I	1	600T150-54	3'-4 15/16"	GRAB BAR
J	6	600S162-54	3'-1 3/8"	CRIPPLE
K	1	600T150-54	3'-0 3/4"	HEAD TRACK
L	1	600T150-54	3'-0 3/4"	SILL
M	1	600T150-54	2'-10 1/2"	GRAB BAR
N	6	600S162-54	2'-2 3/4"	CRIPPLE
O	2	1500U50-54	2'-0 1/16"	HORIZONTAL BRACING

SHEATHING LABEL	QTY	CODE	THICK	SIZE	SCREENS
1	1	DENSGLOSS	1/2"	6 3/8" X 10'-5 9/16"	8 - 12
2	4	DENSGLOSS	1/2"	6 3/8" X 5'-0 1/2"	8 - 12
3	1	DENSGLOSS	1/2"	3'-0 1/4" X 6 5/16"	8 - 12
4	1	DENSGLOSS	1/2"	3'-0 7/8" X 6 5/16"	8 - 12
5	1	DENSGLOSS	1/2"	4'-0 1/4" X 6 5/16"	8 - 12
6	1	DENSGLOSS	1/2"	4'-0 7/8" X 6 5/16"	8 - 12