

12-1011

Jewish Home for the Aging

1885 Victory Blvd. Reseda, CA

CREATED: 11/06/2008

FM-07-109

CREATED BY: HH

HEIGHT : 10'-6" POINTS: 3.73 Points.

SPACING : 5000"

1st STUD: 5000"

WEIGHTS :

FRAME : 572 lbs

TOTAL: 572 lbs

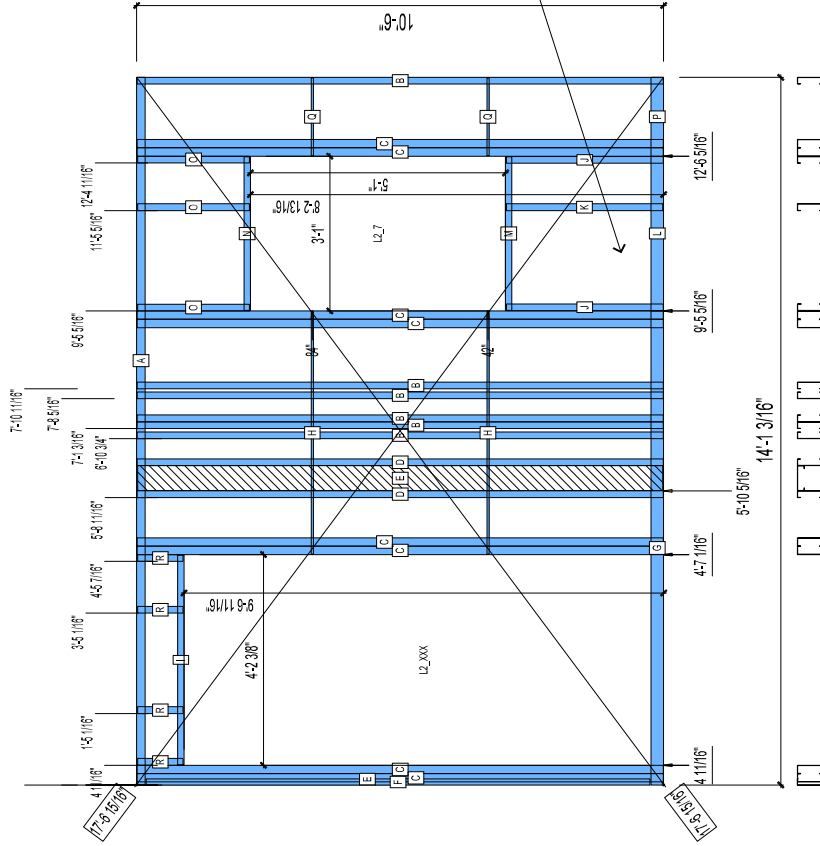
FrameMax, Inc.
13915 Danielson St
Suite 100
Poway, CA 92064
www.frame-max.com

FRAME MAX

© FrameMax Inc.

**BUNDLE AND
SHIP TO SITE**

**FRAME SILL AS SEPERATE WALL,
SILL SHALL BE ATTACHED IN FIELD
AT A LATER TIME.**



PIECES LIST LABEL	QTY	SIZE	LENGTH	USE
A	1	600T200-68	14'-1 3/16"	TOP TRACK
B	6	600S162-68	10'-5 13/16"	STUD
C	8	600S200-68	10'-5 13/16"	KING STUD
D	2	600S162-33	10'-5 13/16"	BACKER STUD
E	1	600S162-33	10'-5 9/16"	BACKER-U
F	1	600T150-54	10'-0 1/2"	CAP
G	1	600T300-68	9'-5 5/16"	BOTTOM TRACK
H	2	150U50-54	4'-10"	HORIZONTAL BRACING
I	1	600T150-54	4'-2 1/8"	HEAD TRACK
J	2	600S162-54	3'-1 1/2"	CRIPPLE
K	1	600S162-54	3'-1 3/8"	CRIPPLE
L	1	600T300-68	3'-0 7/8"	BOTTOM TRACK
M	1	600T150-54	3'-0 3/4"	SILL
N	1	600T150-54	3'-0 3/4"	HEAD TRACK
O	3	600S162-54	2'-2 3/4"	CRIPPLE
P	1	600T300-68	1'-6 13/16"	BOTTOM TRACK
Q	2	150U50-54	1'-6 5/8"	HORIZONTAL BRACING
R	4	600S162-54	10 7/8"	CRIPPLE