

12-1012

CREATED: 11/05/2008

Jewish Home for the Aging

1885 Victory Blvd. Reseda, CA

FM-07-109

CREATED BY: AMB

POINTS: 1.87 Points.

HEIGHT : 10'-6"
 SPACING : 5000"
 1st STUD: 5000"

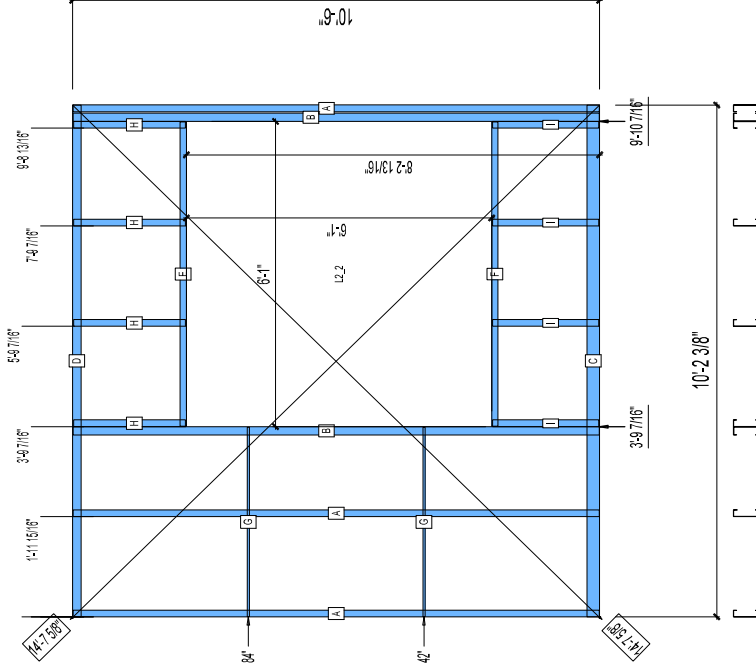
WEIGHTS :
 FRAME : 243 lbs
 SHEATHING: 32 lbs

 TOTAL: 275 lbs

FrameMax, Inc.
 13915 Danielson St
 Suite 100
 Poway, CA 92064
 www.framemax.com

FRAME MAX

© FrameMax Inc



**BUNDLE AND
 SHIP TO SITE**

| PIECES LIST LABEL | QTY | SIZE | LENGTH | USE |
|-------------------|-----|------------|--------------|--------------------|
| A | 3 | 600S162-54 | 10'-5 13/16" | STUD |
| B | 2 | 600S200-97 | 10'-5 13/16" | KING STUD |
| C | 1 | 600T300-54 | 10'-2 3/8" | BOTTOM TRACK |
| D | 1 | 600T200-54 | 10'-2 3/8" | TOP TRACK |
| E | 1 | 600T150-54 | 6'-0 3/4" | HEAD TRACK |
| F | 1 | 600T150-54 | 6'-0 3/4" | SILL |
| G | 2 | 1500U50-54 | 3'-9 1/4" | HORIZONTAL BRACING |
| H | 4 | 600S162-54 | 2'-2 3/4" | CRIPPLE |
| I | 4 | 600S162-54 | 2'-1 3/8" | CRIPPLE |

| SHEATHING LABEL | QTY | CODE | THICK | SIZE | SCREWS |
|-----------------|-----|-----------|-------|-------------|------------------|
| 1 | 2 | DENSGLOSS | 1/2" | 6 3/8" X | 6'-0 1/2" 8 - 12 |
| 2 | 1 | DENSGLOSS | 1/2" | 6'-0 1/4" X | 6 5/16" 8 - 12 |
| 3 | 1 | DENSGLOSS | 1/2" | 6'-0 7/8" X | 6 5/16" 8 - 12 |