

12-1186

Jewish Home for the Aging

1885 Victory Blvd. Reseda, CA

CREATED: 11/10/2008

FM-07-109

CREATED BY: AMB

POINTS: 3.17 Points.

HEIGHT : 10'-6"

SPACING : 5000"

1st STUD: 5000"

WEIGHTS :

FRAME : 257 lbs

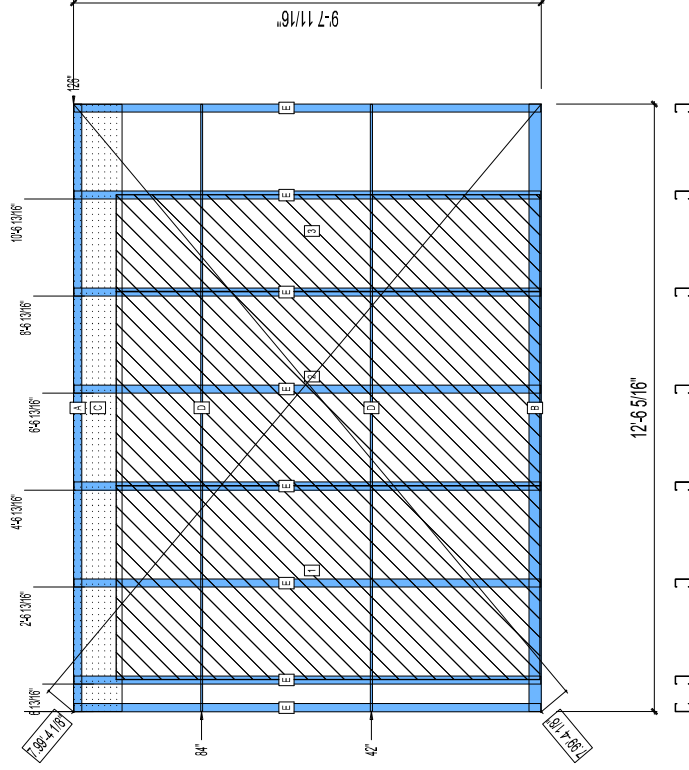
SHEATHING: 322 lbs

TOTAL: 579 lbs

FrameMax, Inc.
13915 Danielson St
Suite 100
Poway, CA 92064
www.frame-max.com

FRAME MAX

© FrameMax Inc.



**BUNDLE AND
SHIP TO SITE
WALL UNDER BEAM**

PIECES LIST	LENGTH	USE
A	12'-6 5/16"	TOP TRACK
B	12'-6 5/16"	BOTTOM TRACK
C	12'-6 1/4"	STRAP
D	12'-6 1/8"	HORIZONTAL BRACING
E	9'-7 1/2"	STUD

SHEATHING LABEL	QTY	CODE	THICK	SIZE	SCREENS
1	1	SB-DENSARMOR	5/8"	4'-0" X 8'-8 7/8"	2 - 12
2	1	SB-DENSARMOR	5/8"	4'-0" X 8'-8 7/8"	2 - 12
3	1	SB-DENSARMOR	5/8"	2'-0" X 8'-8 7/8"	2 - 12