

12-1001

Jewish Home for the Aging

1885 Victory Blvd. Reseda, CA

FM-07-109

CREATED BY: HH

FrameMax, Inc.
13915 Danielson St
Suite 100
Poway, CA 92064
www.framemax.com



© FrameMax Inc.

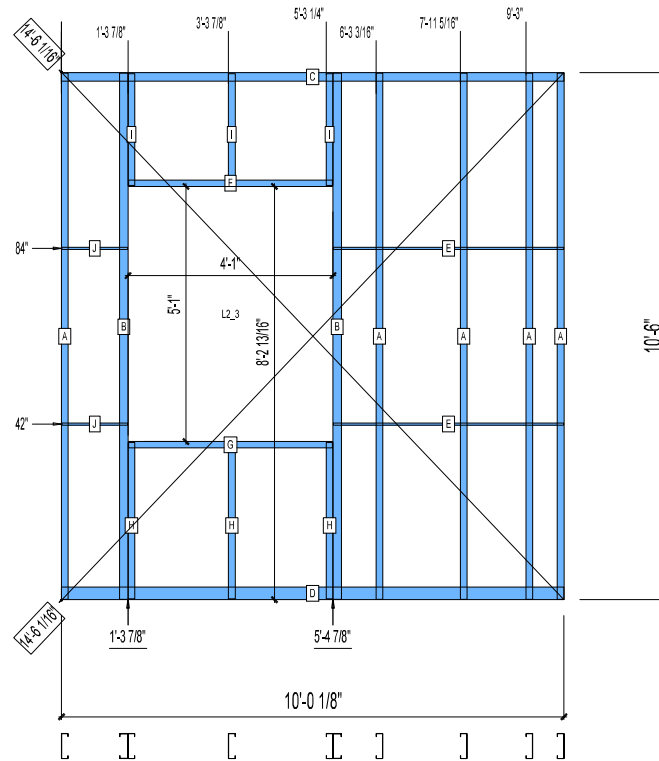
HEIGHT : 10'-6"
SPACING : 5000"
1st STUD: 5000"

POINTS: 2.02 Points.

APPROVED
By hhuynh at 9:37 am, Nov 24, 2008

WEIGHTS :
FRAME : 276 lbs
SHEATHING: 24 lbs

TOTAL: 300 lbs



**BUNDLE AND
SHIP TO SITE**

PIECES LIST

LABEL	QTY	SIZE	LENGTH	USE
A	5	600S162-54	10'-5 13/16"	STUD
B	2	600S200-97	10'-5 13/16"	KING STUD
C	1	600T200-54	10'-0 1/8"	TOP TRACK
D	1	600T300-54	10'-0 1/8"	BOTTOM TRACK
E	2	150U50-54	4'-7"	HORIZONTAL BRACING
F	1	600T150-54	4'-0 3/4"	HEAD TRACK
G	1	600T150-54	4'-0 3/4"	SILL
H	3	600S162-54	3'-1 3/8"	CRIPPLE
I	3	600S162-54	2'-2 3/4"	CRIPPLE
J	2	150U50-54	1'-3 11/16"	HORIZONTAL BRACING

SHEATHING

LABEL	QTY	CODE	THICK	SIZE	SCREWS
1	2	DENSGLOSS	1/2"	6 3/8" X	5'-0 1/2" 8 - 12
2	1	DENSGLOSS	1/2"	4'-0 7/8" X	6 5/16" 8 - 12
3	1	DENSGLOSS	1/2"	4'-0 1/4" X	6 5/16" 8 - 12

12-1002

Jewish Home for the Aging

1885 Victory Blvd. Reseda, CA

FM-07-109

CREATED BY: HH

FrameMax, Inc.
13915 Danielson St
Suite 100
Poway, CA 92064
www.frame-max.com



© FrameMax Inc.

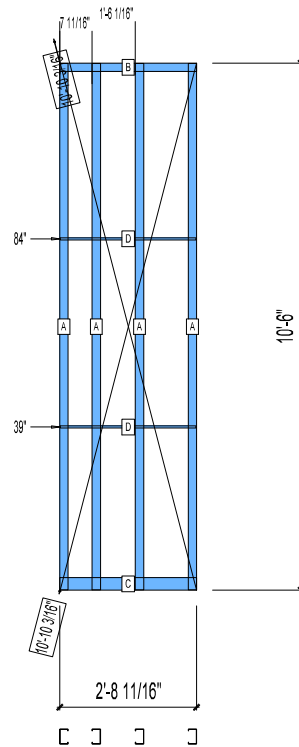
HEIGHT : 10'-6"
SPACING : 5000"
1st STUD: 5000"

POINTS: 0.68 Points.

APPROVED
By hhuynh at 9:37 am, Nov 24, 2008

WEIGHTS :
FRAME : 99 lbs

TOTAL: 99 lbs



**BUNDLE AND
SHIP TO SITE**

PIECES LIST

LABEL	QTY	SIZE	LENGTH	USE
A	4	362S200-68	10'-5 13/16"	STUD
B	1	362T200-68	2'-8 11/16"	TOP TRACK
C	1	362T300-68	2'-8 11/16"	BOTTOM TRACK
D	2	150U50-54	1'-8 1/2"	HORIZONTAL BRACING

12-1003

Jewish Home for the Aging

1885 Victory Blvd. Reseda, CA

FM-07-109

CREATED BY: HH

FrameMax, Inc.
13915 Danielson St
Suite 100
Poway, CA 92064
www.frame-max.com



© FrameMax Inc.

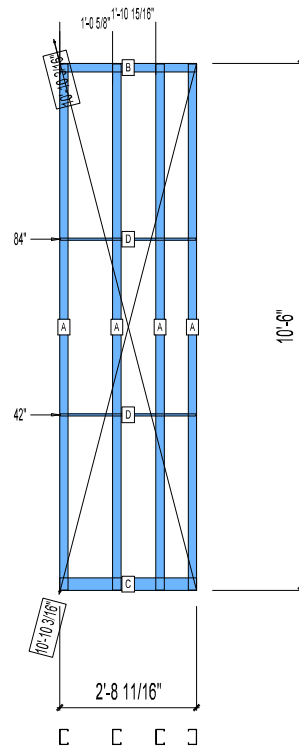
HEIGHT : 10'-6"
SPACING : 5000"
1st STUD: 5000"

POINTS: 0.69 Points.

APPROVED
By hhuynh at 9:37 am, Nov 24, 2008

WEIGHTS :
FRAME : 102 lbs

TOTAL: 102 lbs



**BUNDLE AND
SHIP TO SITE**

PIECES LIST

LABEL	QTY	SIZE	LENGTH	USE
A	4	362S200-68	10'-5 13/16"	STUD
B	1	362T200-68	2'-8 11/16"	TOP TRACK
C	1	362T300-68	2'-8 11/16"	BOTTOM TRACK
D	2	150U50-54	2'-8 1/2"	HORIZONTAL BRACING

12-1004

Jewish Home for the Aging

1885 Victory Blvd. Reseda, CA

FM-07-109

CREATED BY: HH

FrameMax, Inc.
13915 Danielson St
Suite 100
Poway, CA 92064
www.frame-max.com



© FrameMax Inc.

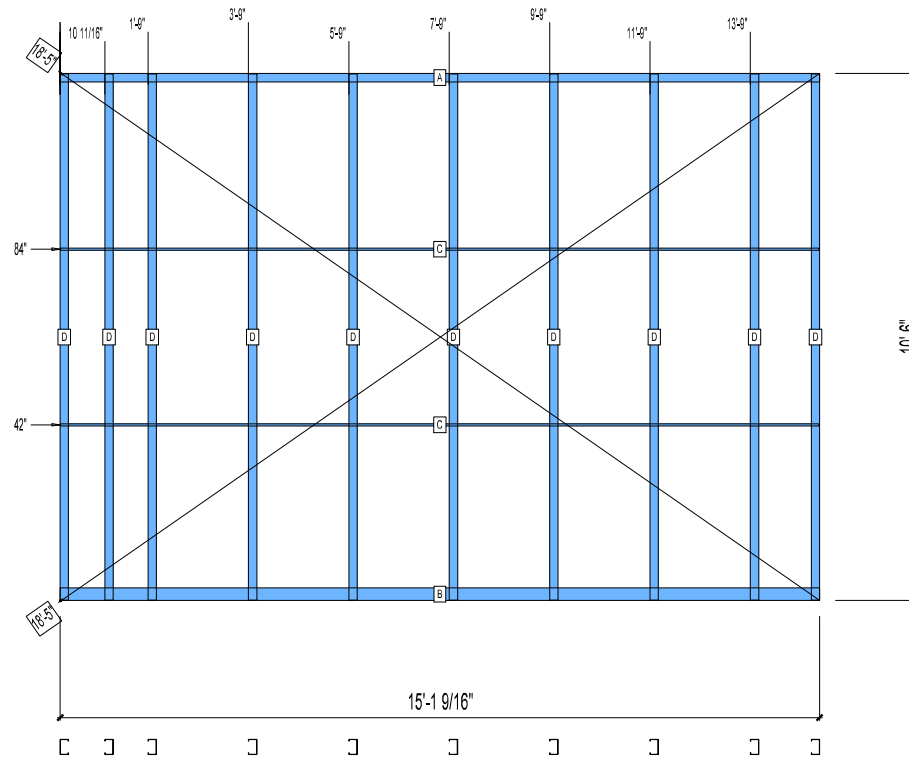
HEIGHT : 10'-6"
SPACING : 5000"
1st STUD: 5000"

POINTS: 1.94 Points.

APPROVED
By hhuynh at 9:37 am, Nov 24, 2008

WEIGHTS :
FRAME : 291 lbs

TOTAL: 291 lbs



**BUNDLE AND
SHIP TO SITE**

PIECES LIST

LABEL	QTY	SIZE	LENGTH	USE
A	1	362T200-68	15'-1 9/16"	TOP TRACK
B	1	362T300-68	15'-1 9/16"	BOTTOM TRACK
C	2	150U50-54	15'-1 3/8"	HORIZONTAL BRACING
D	10	362S200-68	10'-5 13/16"	STUD

12-1005

Jewish Home for the Aging

1885 Victory Blvd. Reseda, CA

FM-07-109

CREATED BY: HH

FrameMax, Inc.
13915 Danielson St
Suite 100
Poway, CA 92064
www.frame-max.com



© FrameMax Inc.

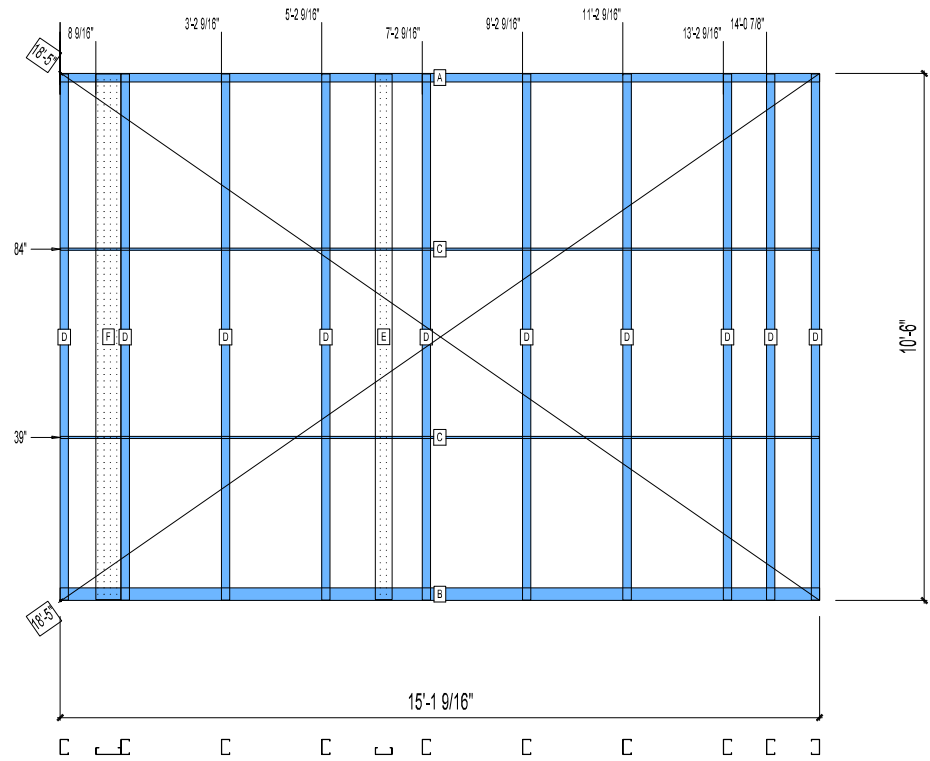
HEIGHT : 10'-6"
SPACING : 5000"
1st STUD: 5000"

POINTS: 2.12 Points.

APPROVED
By hhuynh at 9:37 am, Nov 24, 2008

WEIGHTS :
FRAME : 321 lbs

TOTAL: 321 lbs



**BUNDLE AND
SHIP TO SITE**

PIECES LIST

LABEL	QTY	SIZE	LENGTH	USE
A	1	362T200-68	15'-1 9/16"	TOP TRACK
B	1	362T300-68	15'-1 9/16"	BOTTOM TRACK
C	2	150U50-54	15'-1 3/8"	HORIZONTAL BRACING
D	10	362S200-68	10'-5 13/16"	STUD
E	1	400S162-33	10'-5 11/16"	BACKER-U
F	1	600S162-33	10'-5 11/16"	BACKER-U

12-1006

Jewish Home for the Aging

1885 Victory Blvd. Reseda, CA

FM-07-109

CREATED BY: HH

FrameMax, Inc.
13915 Danielson St
Suite 100
Poway, CA 92064
www.frame-max.com



© FrameMax Inc.

HEIGHT : 10'-6" POINTS: 3.29 Points.

SPACING : 5000"

1st STUD: 5000"

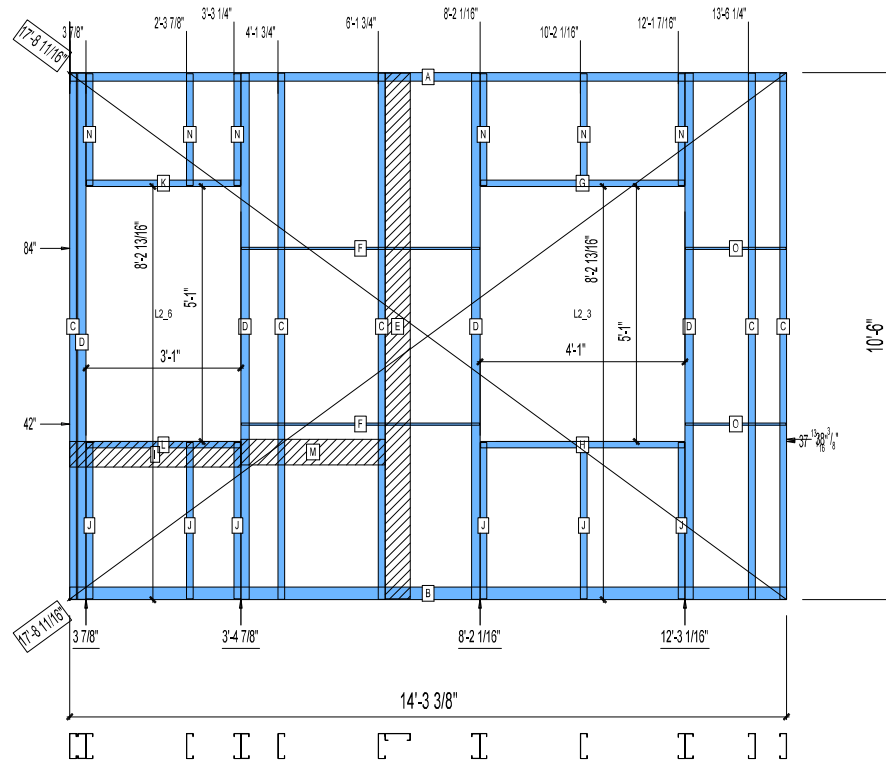
APPROVED
By hhuynh at 9:37 am, Nov 24, 2008

WEIGHTS :

FRAME : 439 lbs

SHEATHING: 59 lbs

TOTAL: 498 lbs



**BUNDLE AND
SHIP TO SITE**

PIECES LIST

LABEL	QTY	SIZE	LENGTH	USE
A	1	600T200-54	14'-3 3/8"	TOP TRACK
B	1	600T300-54	14'-3 3/8"	BOTTOM TRACK
C	5	600S162-54	10'-5 13/16"	STUD
D	4	600S200-97	10'-5 13/16"	KING STUD
E	1	600S162-33	10'-5 11/16"	BACKER-U
F	2	150U50-54	4'-8 15/16"	HORIZONTAL BRACING
G	1	600T150-54	4'-0 3/4"	HEAD TRACK
H	1	600T150-54	4'-0 3/4"	SILL
I	1	600T150-54	3'-4 15/16"	GRAB BAR
J	6	600S162-54	3'-1 3/8"	CRIPPLE
K	1	600T150-54	3'-0 3/4"	HEAD TRACK
L	1	600T150-54	3'-0 3/4"	SILL
M	1	600T150-54	2'-10 1/2"	GRAB BAR
N	6	600S162-54	2'-2 3/4"	CRIPPLE
O	2	150U50-54	2'-0 1/16"	HORIZONTAL BRACING

SHEATHING

LABEL	QTY	CODE	THICK	SIZE	SCREWS
1	1	DENSGLASS	1/2"	6 3/8" X 10'-5 9/16"	8 - 12
2	4	DENSGLASS	1/2"	6 3/8" X 5'-0 1/2"	8 - 12
3	1	DENSGLASS	1/2"	3'-0 1/4" X 6 5/16"	8 - 12
4	1	DENSGLASS	1/2"	3'-0 7/8" X 6 5/16"	8 - 12
5	1	DENSGLASS	1/2"	4'-0 1/4" X 6 5/16"	8 - 12
6	1	DENSGLASS	1/2"	4'-0 7/8" X 6 5/16"	8 - 12

12-1007

Jewish Home for the Aging

1885 Victory Blvd. Reseda, CA

FM-07-109

CREATED BY: HH

FrameMax, Inc.
13915 Danielson St
Suite 100
Poway, CA 92064
www.framemax.com



© FrameMax Inc.

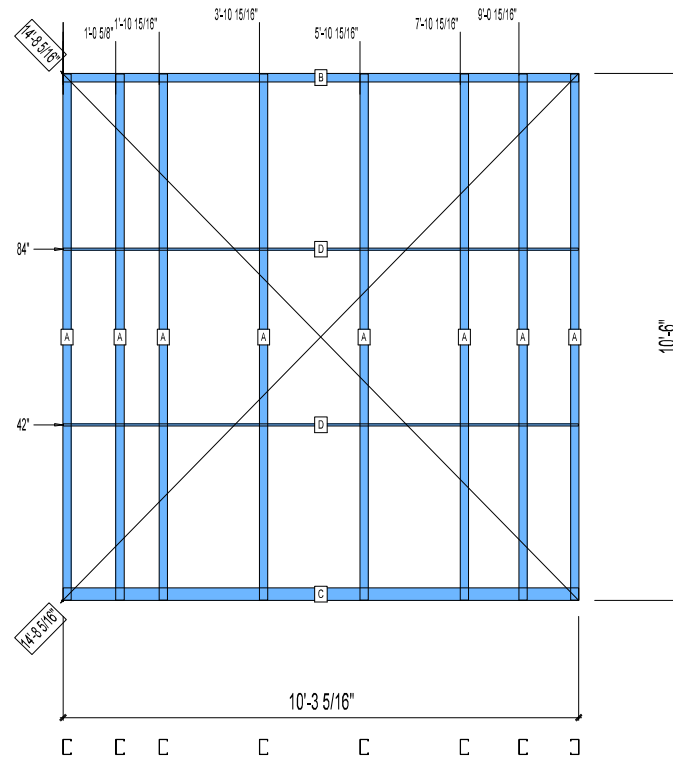
HEIGHT : 10'-6"
SPACING : 5000"
1st STUD: 5000"

POINTS: 1.51 Points.

APPROVED
By hhuynh at 9:37 am, Nov 24, 2008

WEIGHTS :
FRAME : 229 lbs

TOTAL: 229 lbs



**BUNDLE AND
SHIP TO SITE**

PIECES LIST

LABEL	QTY	SIZE	LENGTH	USE
A	8	362S200-68	10'-5 13/16"	STUD
B	1	362T200-68	10'-3 5/16"	TOP TRACK
C	1	362T300-68	10'-3 5/16"	BOTTOM TRACK
D	2	150U50-54	10'-3 1/8"	HORIZONTAL BRACING

12-1008

Jewish Home for the Aging

1885 Victory Blvd. Reseda, CA

FM-07-109

CREATED BY: HH

FrameMax, Inc.
13915 Danielson St
Suite 100
Poway, CA 92064
www.frame-max.com



© FrameMax Inc.

HEIGHT : 10'-6"
SPACING : 5000"
1st STUD: 5000"

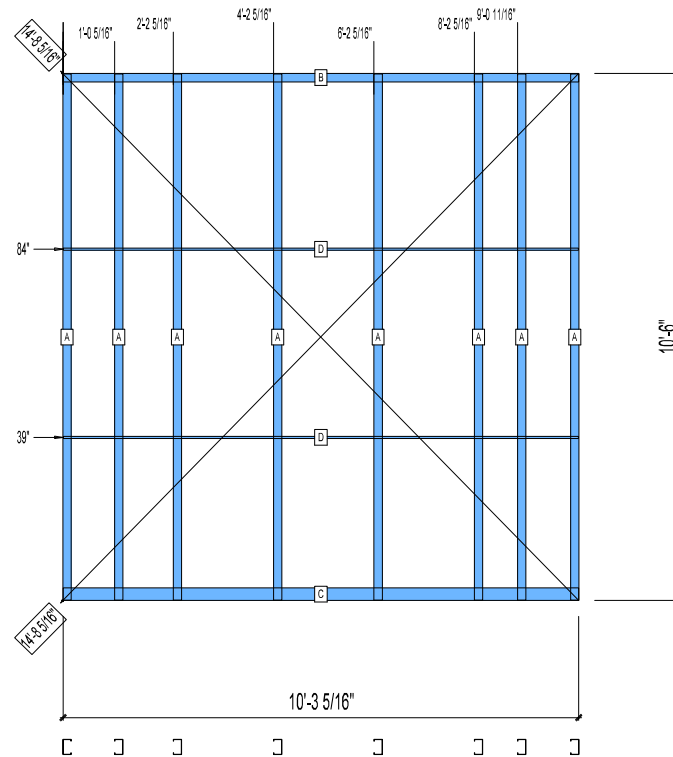
POINTS: 1.49 Points.

APPROVED

By hhuynh at 9:37 am, Nov 24, 2008

WEIGHTS :
FRAME : 223 lbs

TOTAL: 223 lbs



**BUNDLE AND
SHIP TO SITE**

PIECES LIST

LABEL	QTY	SIZE	LENGTH	USE
A	8	362S200-68	10'-5 13/16"	STUD
B	1	362T200-68	10'-3 5/16"	TOP TRACK
C	1	362T300-68	10'-3 5/16"	BOTTOM TRACK
D	2	150U50-54	10'-3 1/8"	HORIZONTAL BRACING

12-1009

Jewish Home for the Aging

1885 Victory Blvd. Reseda, CA

FM-07-109

CREATED BY: HH

FrameMax, Inc.
13915 Danielson St
Suite 100
Poway, CA 92064
www.frame-max.com



© FrameMax Inc.

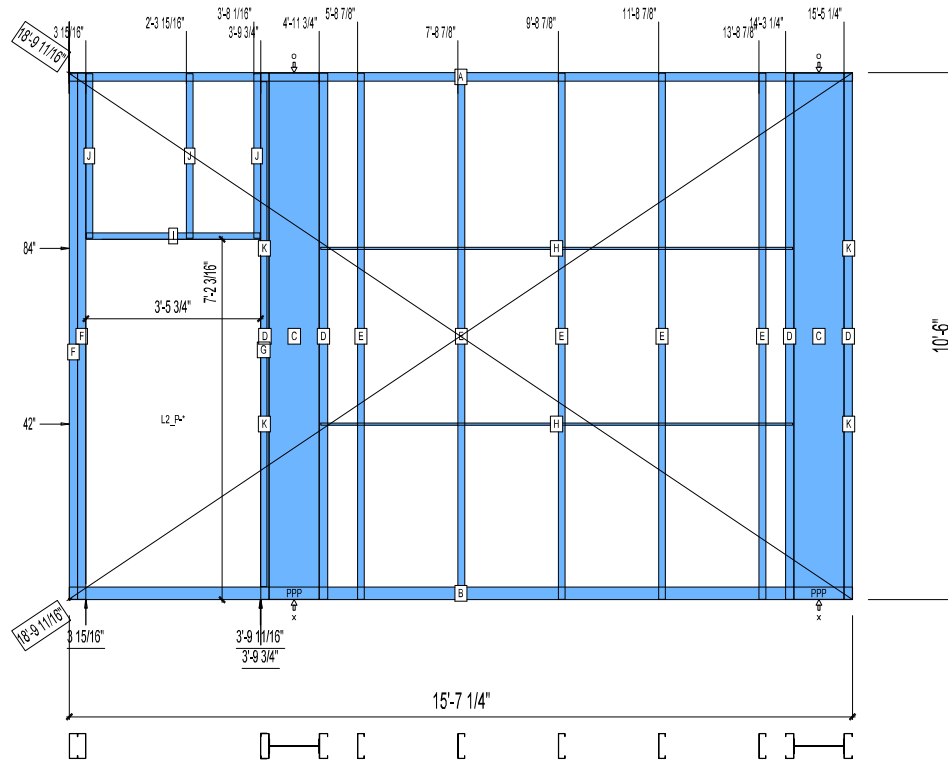
HEIGHT : 10'-6"
SPACING : 5000"
1st STUD: 5000"

POINTS: 3.87 Points.

APPROVED
By hhuynh at 9:37 am, Nov 24, 2008

WEIGHTS :
FRAME : 657 lbs

TOTAL: 657 lbs



**BUNDLE AND
SHIP TO SITE**

PIECES LIST

LABEL	QTY	SIZE	LENGTH	USE
A	1	600T200-68	15'-7 1/4"	TOP TRACK
B	1	600T300-68	15'-7 1/4"	BOTTOM TRACK
C	2	1200i350p1062	10'-5 13/16"	PACO
D	4	600S200-68	10'-5 13/16"	STUD
E	5	600S162-68	10'-5 13/16"	STUD
F	2	600S200-68	10'-5 13/16"	KING STUD
G	1	600T150-54	10'-0 3/4"	CAP TRACK
H	2	150U50-54	9'-4 13/16"	HORIZONTAL BRACING
I	1	600T150-54	3'-5 1/2"	HEAD TRACK
J	3	600S162-54	3'-3 3/8"	CRIPPLE
K	4	150U50-54	1 5/8"	HORIZONTAL BRACING

12-1186

Jewish Home for the Aging

1885 Victory Blvd. Reseda, CA

FM-07-109

CREATED BY: AMB

FrameMax, Inc.
13915 Danielson St
Suite 100
Poway, CA 92064
www.frame-max.com



© FrameMax Inc.

HEIGHT : 10'-6"
SPACING : 5000"
1st STUD : 5000"

POINTS: 3.17 Points.

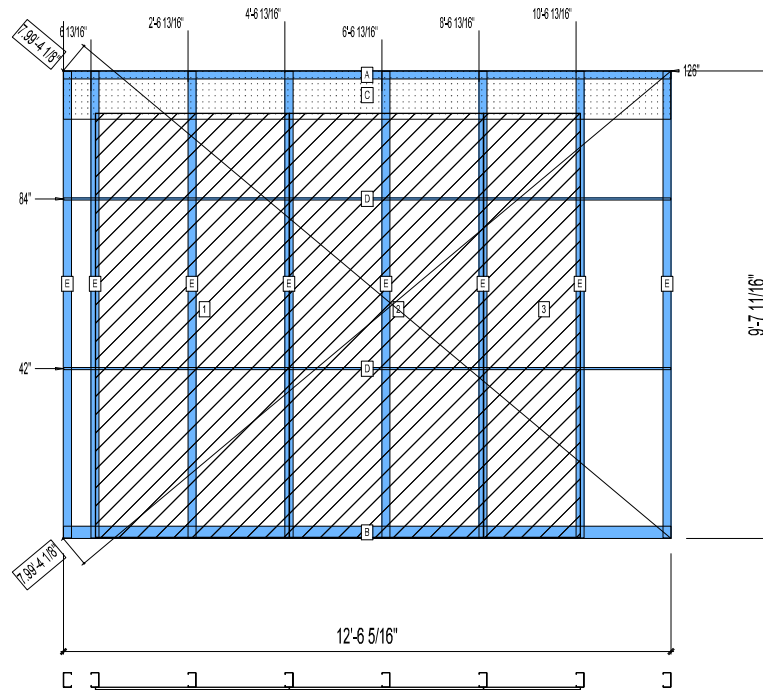
CREATED BY: HH

APPROVED

By hhuynh at 9:37 am, Nov 24, 2008

WEIGHTS :
FRAME : 257 lbs
SHEATHING: 322 lbs

TOTAL: 579 lbs



**BUNDLE AND
SHIP TO SITE
WALL UNDER BEAM**

PIECES LIST

LABEL	QTY	SIZE	LENGTH	USE
A	1	362T200-68	12'-6 5/16"	TOP TRACK
B	1	362T300-68	12'-6 5/16"	BOTTOM TRACK
C	1	1200D-54	12'-6 1/4"	STRAP
D	2	1500S0-54	12'-6 1/8"	HORIZONTAL BRACING
E	8	362S200-68	9'-7 1/2"	STUD

SHEATHING

LABEL	QTY	CODE	THICK	SIZE	SCREWS
1	1	SB-DENSARMOR	5/8"	4'-0" X 8'-8 7/8"	2 - 12
2	1	SB-DENSARMOR	5/8"	4'-0" X 8'-8 7/8"	2 - 12
3	1	SB-DENSARMOR	5/8"	2'-0" X 8'-8 7/8"	2 - 12

12-1011

Jewish Home for the Aging

1885 Victory Blvd. Reseda, CA

FM-07-109

CREATED BY: HH

FrameMax, Inc.
13915 Danielson St
Suite 100
Poway, CA 92064
www.frame-max.com



© FrameMax Inc.

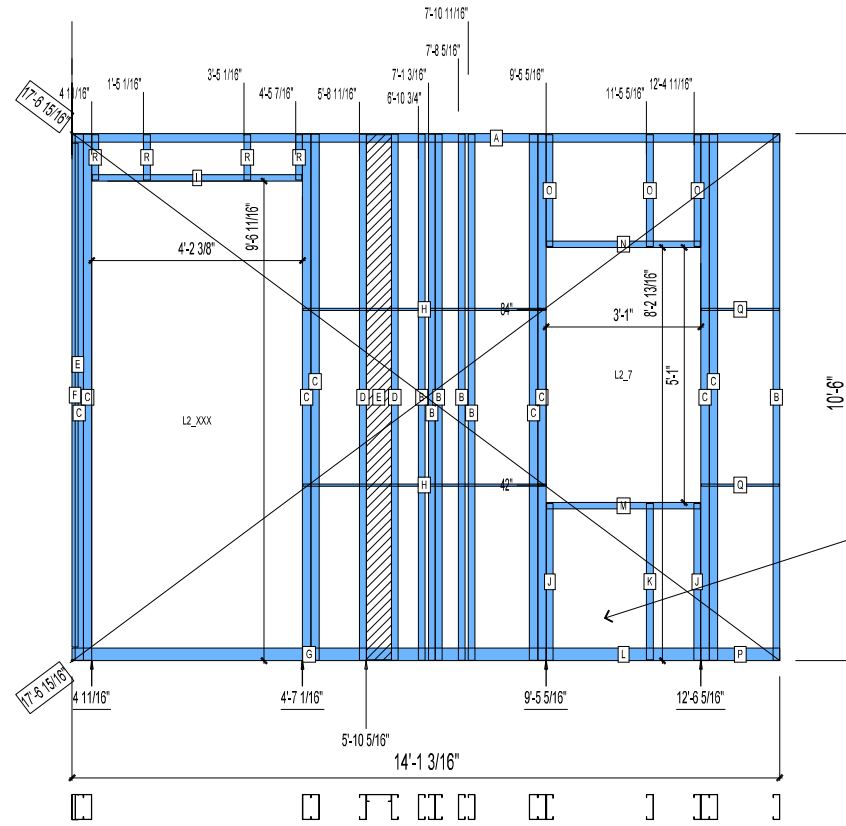
HEIGHT : 10'-6"
SPACING : 5000"
1st STUD: 5000"

POINTS: 3.73 Points.

APPROVED
By hhuynh at 9:37 am, Nov 24, 2008

WEIGHTS :
FRAME : 572 lbs

TOTAL: 572 lbs



**BUNDLE AND
SHIP TO SITE**

FRAME SILL AS SEPERATE WALL,
SILL SHALL BE ATTACHED IN FIELD
AT A LATER TIME.

PIECES LIST			
LABEL	QTY	SIZE	LENGTH USE
A	1	600T200-68	14'-1 3/16" TOP TRACK
B	6	600S162-68	10'-5 13/16" STUD
C	8	600S200-68	10'-5 13/16" KING STUD
D	2	600S162-33	10'-5 13/16" BACKER STUD
E	1	600S162-33	10'-5 9/16" BACKER-U
F	1	600T150-54	10'-0 1/2" CAP
G	1	600T300-68	9'-5 5/16" BOTTOM TRACK
H	2	150U50-54	4'-10" HORIZONTAL BRACING
I	1	600T150-54	4'-2 1/8" HEAD TRACK
J	2	600S162-54	3'-1 1/2" CRIPPLE
K	1	600S162-54	3'-1 3/8" CRIPPLE
L	1	600T300-68	3'-0 7/8" BOTTOM TRACK
M	1	600T150-54	3'-0 3/4" SILL
N	1	600T150-54	3'-0 3/4" HEAD TRACK
O	3	600S162-54	2'-2 3/4" CRIPPLE
P	1	600T300-68	1'-6 13/16" BOTTOM TRACK
Q	2	150U50-54	1'-6 5/8" HORIZONTAL BRACING
R	4	600S162-54	10 7/8" CRIPPLE

12-1012

Jewish Home for the Aging

1885 Victory Blvd. Reseda, CA

FM-07-109

CREATED BY: HH

FrameMax, Inc.
13915 Danielson St
Suite 100
Poway, CA 92064
www.frame-max.com



© FrameMax Inc.

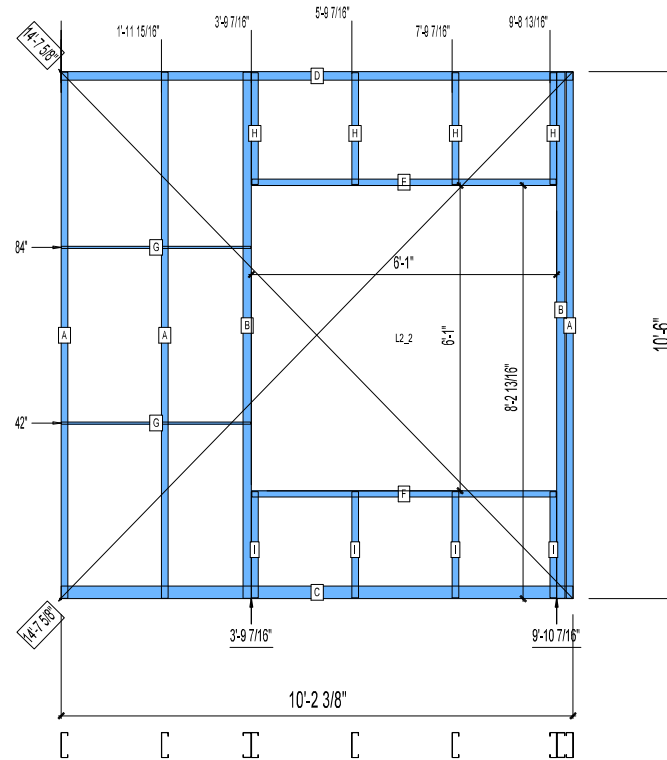
HEIGHT : 10'-6"
SPACING : 5000"
1st STUD: 5000"

POINTS: 1.87 Points.

APPROVED
By hhuynh at 9:37 am, Nov 24, 2008

WEIGHTS :
FRAME : 243 lbs
SHEATHING: 32 lbs

TOTAL: 275 lbs



**BUNDLE AND
SHIP TO SITE**

PIECES LIST			
LABEL	QTY	SIZE	LENGTH USE
A	3	600S162-54	10'-5 13/16" STUD
B	2	600S200-97	10'-5 13/16" KING STUD
C	1	600T300-54	10'-2 3/8" BOTTOM TRACK
D	1	600T200-54	10'-2 3/8" TOP TRACK
E	1	600T150-54	6'-0 3/4" HEAD TRACK
F	1	600T150-54	6'-0 3/4" SILL
G	2	150U50-54	3'-9 1/4" HORIZONTAL BRACING
H	4	600S162-54	2'-2 3/4" CRIPPLE
I	4	600S162-54	2'-1 3/8" CRIPPLE

SHEATHING							
LABEL	QTY	CODE	THICK	SIZE	SCREWS		
1	2	DENSGLASS	1/2"	6 3/8" X	6'-0 1/2"	8	- 12
2	1	DENSGLASS	1/2"	6'-0 1/4" X	6 5/16"	8	- 12
3	1	DENSGLASS	1/2"	6'-0 7/8" X	6 5/16"	8	- 12

12-1013

Jewish Home for the Aging

1885 Victory Blvd. Reseda, CA

FM-07-109

CREATED BY: HH

FrameMax, Inc.
13915 Danielson St
Suite 100
Poway, CA 92064
www.frame-max.com



© FrameMax Inc.

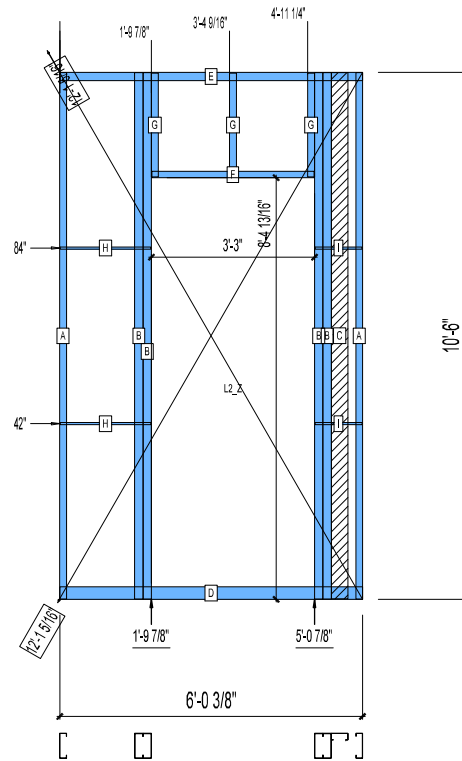
HEIGHT : 10'-6"
SPACING : 5000"
1st STUD: 5000"

POINTS: 1.65 Points.

APPROVED
By hhuynh at 9:37 am, Nov 24, 2008

WEIGHTS :
FRAME : 255 lbs

TOTAL: 255 lbs



**BUNDLE AND
SHIP TO SITE**

PIECES LIST		
LABEL	QTY	SIZE
A	2	600S162-54
B	4	600S200-97
C	1	400S162-33
D	1	600T300-54
E	1	600T200-54
F	1	600T150-54
G	3	600S162-54
H	2	150U50-54
I	2	150U50-54

LENGTH	USE
10'-5 13/16"	STUD
10'-5 13/16"	KING STUD
10'-5 13/16"	BACKER-U
6'-0 3/8"	BOTTOM TRACK
6'-0 3/8"	TOP TRACK
3'-2 3/4"	HEAD TRACK
2'-0 3/4"	CRIPPLE
1'-9 11/16"	HORIZONTAL BRACING
11 1/4"	HORIZONTAL BRACING

12-1014

Jewish Home for the Aging

1885 Victory Blvd. Reseda, CA

FM-07-109

CREATED BY: HH

FrameMax, Inc.
13915 Danielson St
Suite 100
Poway, CA 92064
www.frame-max.com



© FrameMax Inc.

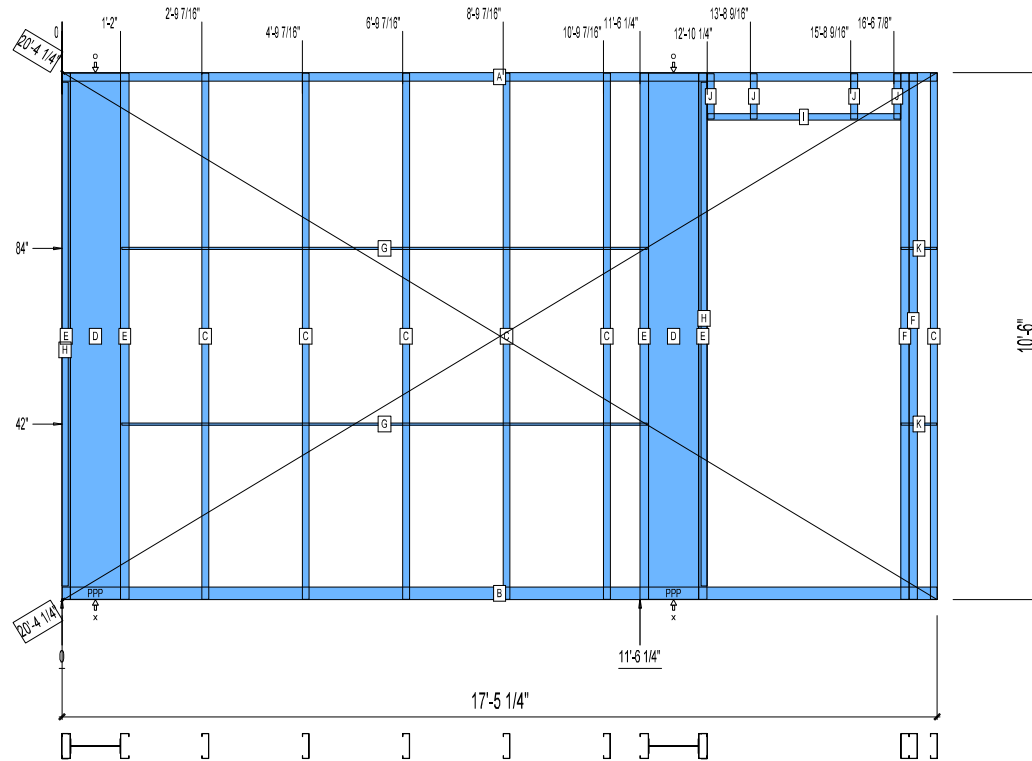
HEIGHT : 10'-6"
SPACING : 5000"
1st STUD: 5000"

POINTS: 4.12 Points.

APPROVED
By hhuynh at 9:37 am, Nov 24, 2008

WEIGHTS :
FRAME : 699 lbs

TOTAL: 699 lbs



BUNDLE AND SHIP TO SITE

PIECES LIST

LABEL	QTY	SIZE	LENGTH	USE
A	1	600T200-68	17'-5 1/4"	TOP TRACK
B	1	600T300-68	17'-5 1/4"	BOTTOM TRACK
C	6	600S162-68	10'-5 13/16"	STUD
D	2	1200i350p1062	10'-5 13/16"	PACO
E	4	600S200-68	10'-5 13/16"	STUD
F	2	600S200-68	10'-5 13/16"	KING STUD
G	2	150U50-54	10'-5 9/16"	HORIZONTAL BRACING
H	2	600T150-54	10'-0 1/2"	CAP
I	1	600T150-54	3'-10"	HEAD TRACK
J	4	600S162-54	10 7/8"	CRIPPLE
K	2	150U50-54	8 1/2"	HORIZONTAL BRACING

12-1044

Jewish Home for the Aging

1885 Victory Blvd. Reseda, CA

FM-07-109

CREATED BY: HH

FrameMax, Inc.
13915 Danielson St
Suite 100
Poway, CA 92064
www.frame-max.com



© FrameMax Inc.

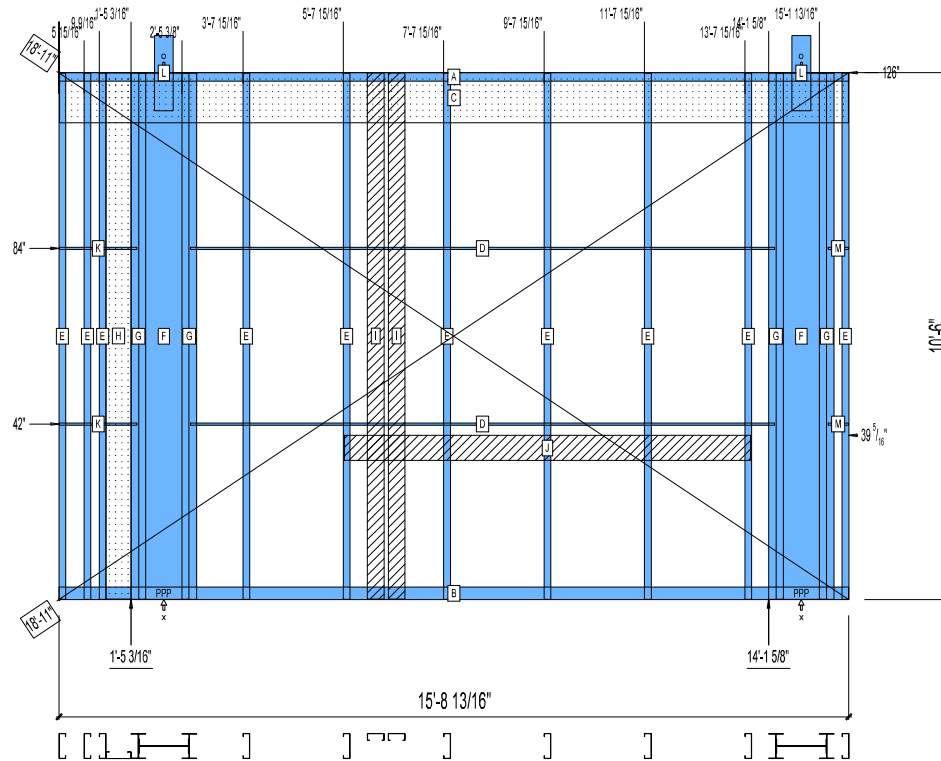
HEIGHT : 10'-6"
SPACING : 5000"
1st STUD: 5000"

POINTS: 5.37 Points.

APPROVED
By hhuynh at 9:37 am, Nov 24, 2008

WEIGHTS :
FRAME : 965 lbs

TOTAL: 965 lbs



**BUNDLE AND
SHIP TO SITE**

PIECES LIST			
LABEL	QTY	SIZE	LENGTH USE
A	1	600T200-68	15'-8 13/16" TOP TRACK
B	1	600T300-68	15'-8 13/16" BOTTOM TRACK
C	1	1200D-54	15'-8 5/8" STRAP
D	2	150U50-54	11'-7 5/8" HORIZONTAL BRACING
E	10	600S162-68	10'-5 13/16" STUD
F	2	1200i350p1062	10'-5 13/16" PACO
G	4	600i350p680	10'-5 13/16" PACO
H	1	600S162-33	10'-5 13/16" BACKER-U
I	2	400S162-33	10'-5 13/16" BACKER-U
J	1	600D-54	8'-1 1/8" VANITY BACKING
K	2	150U50-54	1'-6 9/16" HORIZONTAL BRACING
L	2	A	1'-6" HOLDDOWN
M	2	150U50-54	4 7/8" HORIZONTAL BRACING

12-1045

Jewish Home for the Aging

1885 Victory Blvd. Reseda, CA

FM-07-109

CREATED BY: HH

FrameMax, Inc.
13915 Danielson St
Suite 100
Poway, CA 92064
www.frame-max.com



© FrameMax Inc.

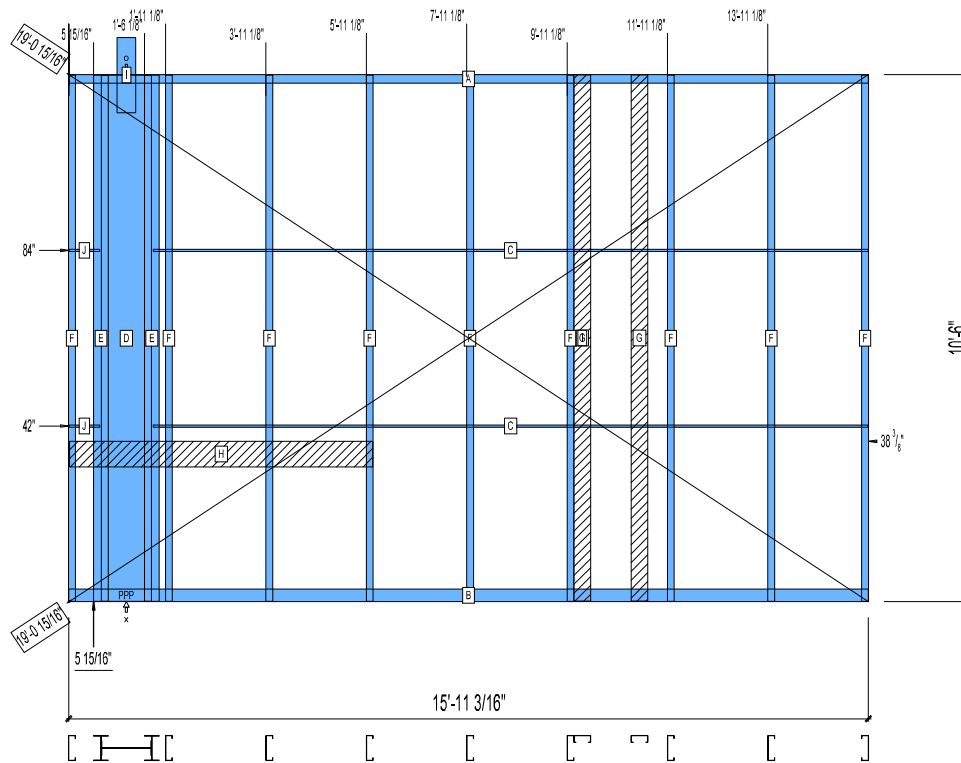
HEIGHT : 10'-6"
SPACING : 5000"
1st STUD: 5000"

POINTS: 3.65 Points.

APPROVED
By hhuynh at 9:37 am, Nov 24, 2008

WEIGHTS :
FRAME : 627 lbs

TOTAL: 627 lbs



**BUNDLE AND
SHIP TO SITE**

PIECES LIST			
LABEL	QTY	SIZE	LENGTH USE
A	1	600T200-68	15'-11 3/16" TOP TRACK
B	1	600T300-68	15'-11 3/16" BOTTOM TRACK
C	2	150U50-54	14'-2 7/8" HORIZONTAL BRACING
D	1	1200i350p1062	10'-5 13/16" PACO
E	2	600i350p680	10'-5 13/16" PACO
F	9	600S162-68	10'-5 13/16" STUD
G	2	400S162-33	10'-5 13/16" BACKER-U
H	1	600T150-54	6'-0 1/2" GRAB BAR
I	1	A	1'-6" HOLDDOWN
J	2	150U50-54	7 5/16" HORIZONTAL BRACING

12-1046

Jewish Home for the Aging

1885 Victory Blvd. Reseda, CA

FM-07-109

CREATED BY: HH

FrameMax, Inc.
13915 Danielson St
Suite 100
Poway, CA 92064
www.frame-max.com



© FrameMax Inc.

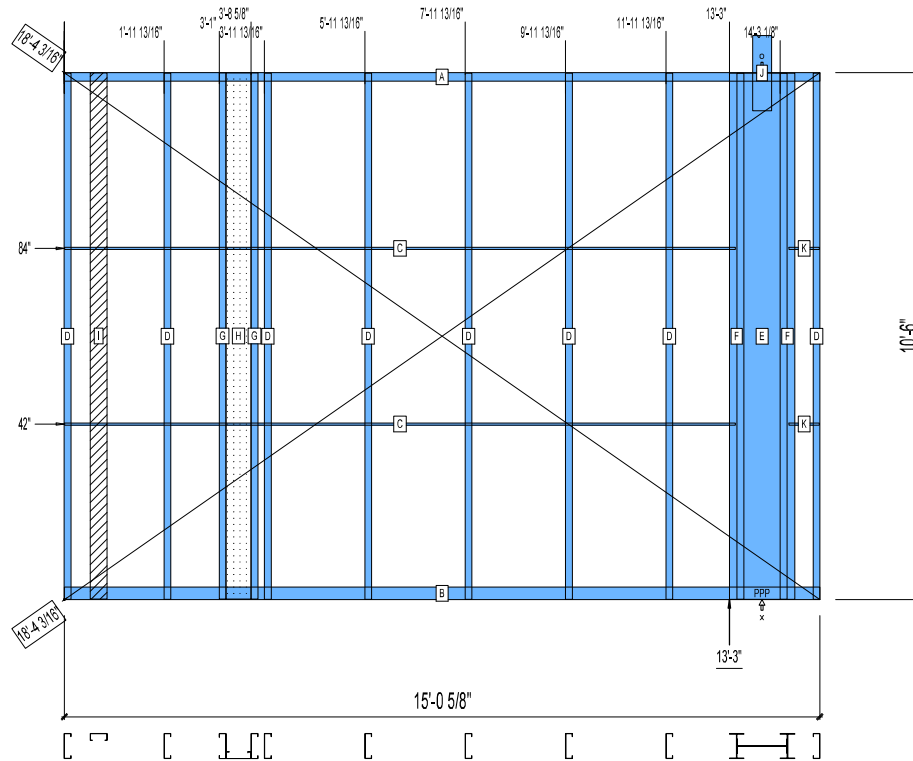
HEIGHT : 10'-6"
SPACING : 5000"
1st STUD: 5000"

POINTS: 3.56 Points.

APPROVED
By hhuynh at 9:37 am, Nov 24, 2008

WEIGHTS :
FRAME : 612 lbs

TOTAL: 612 lbs



**BUNDLE AND
SHIP TO SITE**

PIECES LIST

LABEL	QTY	SIZE	LENGTH	USE
A	1	600T200-68	15'-0 5/8"	TOP TRACK
B	1	600T300-68	15'-0 5/8"	BOTTOM TRACK
C	2	150U50-54	13'-4 5/16"	HORIZONTAL BRACING
D	8	600S162-68	10'-5 13/16"	STUD
E	1	1200i350p1062	10'-5 13/16"	PACO
F	2	600i350p680	10'-5 13/16"	PACO
G	2	600S162-33	10'-5 13/16"	BACKER STUD
H	1	600S162-33	10'-5 13/16"	BACKER-U
I	1	400S162-33	10'-5 13/16"	BACKER-U
J	1	A	1'-6"	HOLDDOWN
K	2	150U50-54	7 5/16"	HORIZONTAL BRACING

12-1047

Jewish Home for the Aging

1885 Victory Blvd. Reseda, CA

FM-07-109

CREATED BY: HH

FrameMax, Inc.
13915 Danielson St
Suite 100
Poway, CA 92064
www.frame-max.com



© FrameMax Inc.

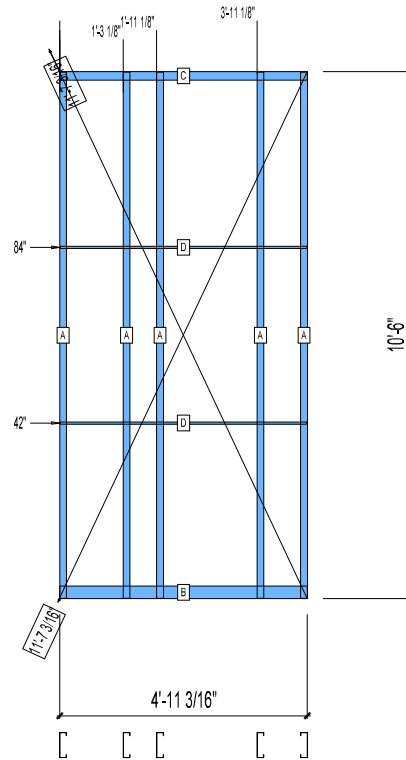
HEIGHT : 10'-6"
SPACING : 5000"
1st STUD: 16"

POINTS: 0.88 Points.

APPROVED
By hhuynh at 9:37 am, Nov 24, 2008

WEIGHTS :
FRAME : 128 lbs

TOTAL: 128 lbs



**BUNDLE AND
SHIP TO SITE**

PIECES LIST

LABEL	QTY	SIZE	LENGTH	USE
A	5	600S162-54	10'-5 13/16"	STUD
B	1	600T300-54	4'-11 3/16"	BOTTOM TRACK
C	1	600T200-54	4'-11 3/16"	TOP TRACK
D	2	150U50-54	4'-11"	HORIZONTAL BRACING

12-1048

Jewish Home for the Aging

1885 Victory Blvd. Reseda, CA

FM-07-109

CREATED BY: AMB

FrameMax, Inc.
13915 Danielson St
Suite 100
Poway, CA 92064
www.frame-max.com



© FrameMax Inc.

HEIGHT : 10'-6"
SPACING : 5000"
1st STUD: 5000"

POINTS: 1.65 Points.

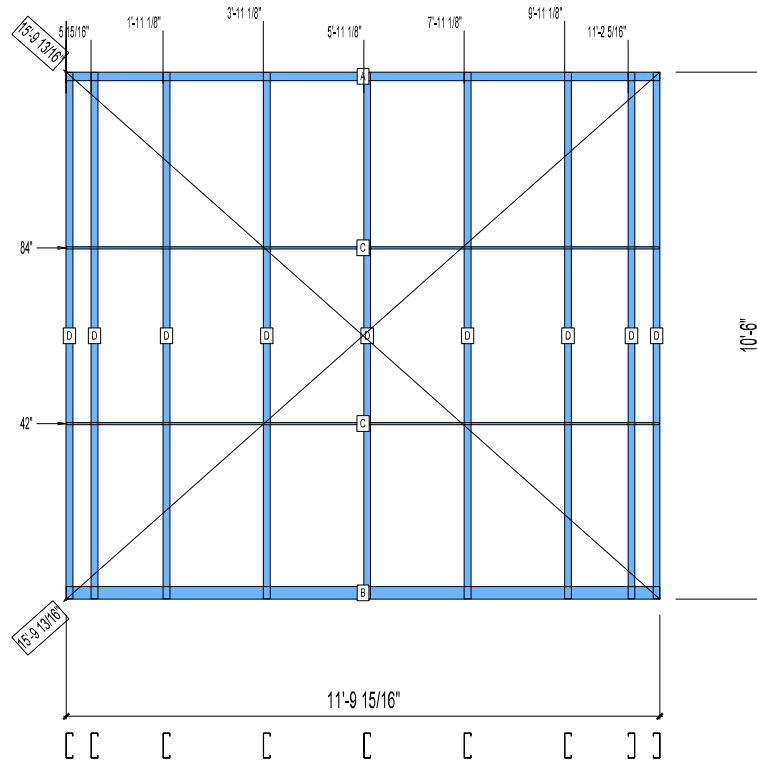
CREATED BY: HH

APPROVED

By hhuynh at 9:37 am, Nov 24, 2008

WEIGHTS :
FRAME : 247 lbs

TOTAL: 247 lbs



**BUNDLE AND
SHIP TO SITE**

PIECES LIST

LABEL	QTY	SIZE	LENGTH	USE
A	1	600T200-54	11'-9 15/16"	TOP TRACK
B	1	600T300-54	11'-9 15/16"	BOTTOM TRACK
C	2	150U50-54	11'-9 3/4"	HORIZONTAL BRACING
D	9	600S162-54	10'-5 13/16"	STUD

12-1049

Jewish Home for the Aging

1885 Victory Blvd. Reseda, CA

FM-07-109

CREATED BY: HH

FrameMax, Inc.
13915 Danielson St
Suite 100
Poway, CA 92064
www.framemax.com



© FrameMax Inc.

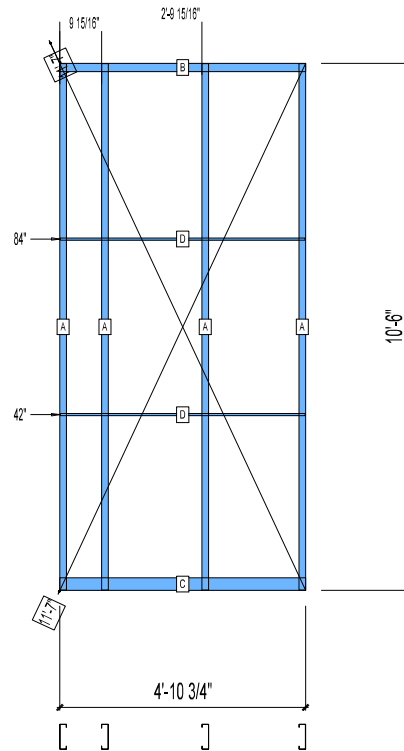
HEIGHT : 10'-6"
SPACING : 5000"
1st STUD: 5000"

POINTS: 0.76 Points.

APPROVED
By hhuynh at 9:37 am, Nov 24, 2008

WEIGHTS :
FRAME : 108 lbs

TOTAL: 108 lbs



**BUNDLE AND
SHIP TO SITE**

PIECES LIST

LABEL	QTY	SIZE	LENGTH	USE
A	4	600S162-54	10'-5 13/16"	STUD
B	1	600T200-54	4'-10 3/4"	TOP TRACK
C	1	600T300-54	4'-10 3/4"	BOTTOM TRACK
D	2	150U50-54	4'-10 9/16"	HORIZONTAL BRACING

12-1050

Jewish Home for the Aging

1885 Victory Blvd. Reseda, CA

FM-07-109

CREATED BY: HH

FrameMax, Inc.
13915 Danielson St
Suite 100
Poway, CA 92064
www.frame-max.com



© FrameMax Inc.

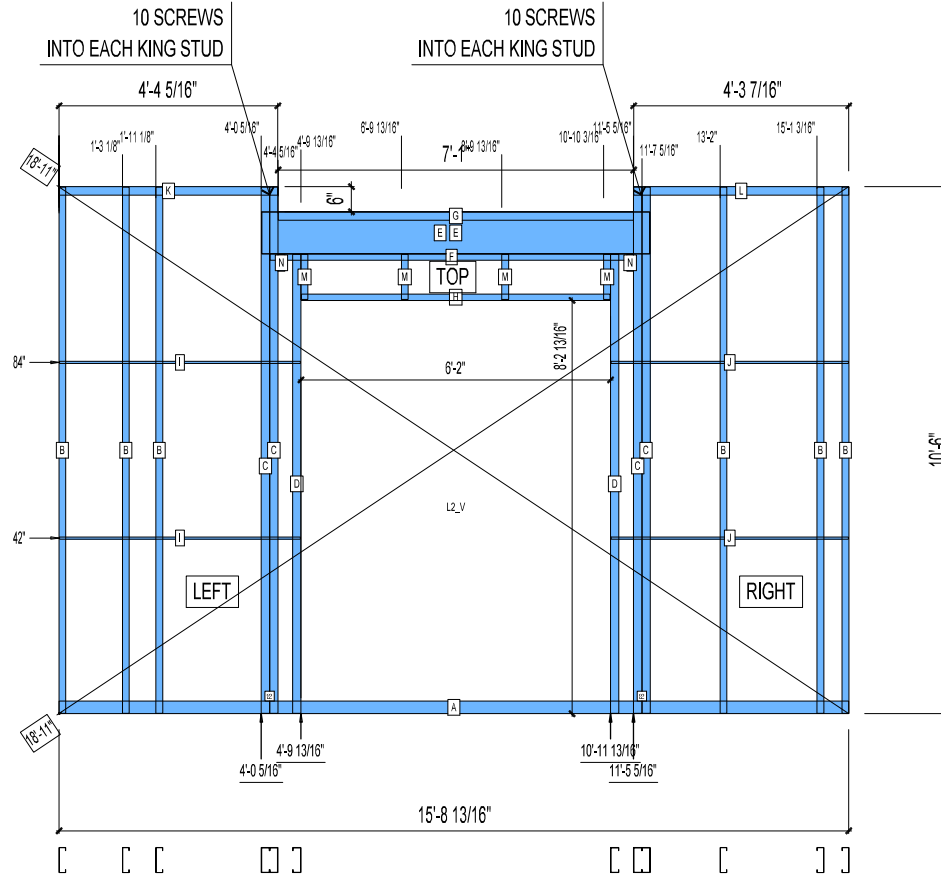
HEIGHT : 10'-6"
SPACING : 5000"
1st STUD: 16"

POINTS: 3.36 Points.

APPROVED
By hhuynh at 9:37 am, Nov 24, 2008

WEIGHTS :
FRAME : 526 lbs

TOTAL: 526 lbs



**BUNDLE AND
SHIP TO SITE**

PIECES LIST

LABEL	QTY	SIZE	LENGTH	USE
A	1	600T300-54	15'-8 13/16"	BOTTOM TRACK
B	6	600S162-54	10'-5 13/16"	STUD
C	4	600S200-97	10'-5 13/16"	EXTRA STUD
D	2	600S200-97	9'-1 3/4"	KING STUD
E	2	1000S200-97	7'-8 3/4"	HEADER
F	1	600T150-54	7'-2 7/8"	HEADER BOTTOM TRACK
G	1	600T200-54	7'-0 15/16"	TOP TRACK
H	1	600T150-54	6'-1 3/4"	HEAD TRACK
I	2	150U50-54	4'-9 5/8"	HORIZONTAL BRACING
J	2	150U50-54	4'-8 3/4"	HORIZONTAL BRACING
K	1	600T200-54	4'-4 5/16"	TOP TRACK
L	1	600T200-54	4'-3 7/16"	TOP TRACK
M	4	600S162-54	10 13/16"	CRIPPLE
N	2	600S162-33	4"	BACKER STUD

12-1179

Jewish Home for the Aging

1885 Victory Blvd. Reseda, CA

CREATED BY: HH

FM-07-109

CREATED BY: AMB

FrameMax, Inc.
13915 Danielson St
Suite 100
Poway, CA 92064
www.frame-max.com



© FrameMax Inc.

HEIGHT : 9'-7 11/16" POINTS: 3.17 Points.

SPACING : 5000"

1st STUD: 5000"

WEIGHTS :

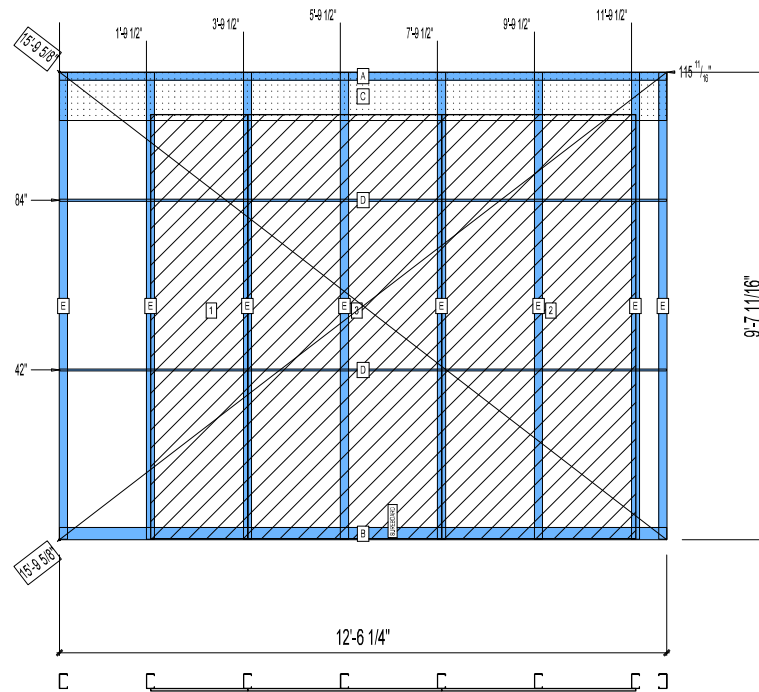
FRAME : 257 lbs

SHEATHING: 322 lbs

TOTAL: 579 lbs

APPROVED

By hhuynh at 9:37 am, Nov 24, 2008



**BUNDLE AND
SHIP TO SITE
WALL UNDER BEAM**

PIECES LIST

LABEL	QTY	SIZE	LENGTH	USE
A	1	362T200-68	12'-6 1/4"	TOP TRACK
B	1	362T300-68	12'-6 1/4"	BOTTOM TRACK
C	1	1200D-54	12'-6 3/16"	STRAP
D	2	1500S0-54	12'-6 1/16"	HORIZONTAL BRACING
E	8	362S200-68	9'-7 1/2"	STUD

SHEATHING

LABEL	QTY	CODE	THICK	SIZE	SCREWS
1	1	SB-DENSARMOR	5/8"	2'-0" X	8'-8 7/8" 2 - 12
2	1	SB-DENSARMOR	5/8"	4'-0" X	8'-8 7/8" 2 - 12
3	1	SB-DENSARMOR	5/8"	4'-0" X	8'-8 7/8" 2 - 12

12-1186

Jewish Home for the Aging

1885 Victory Blvd. Reseda, CA

CREATED BY: HH

FM-07-109

CREATED BY: AMB

FrameMax, Inc.
13915 Danielson St
Suite 100
Poway, CA 92064
www.frame-max.com



© FrameMax Inc.

HEIGHT : 10'-6" POINTS: 3.17 Points.

SPACING : 5000"

1st STUD: 5000"

WEIGHTS :

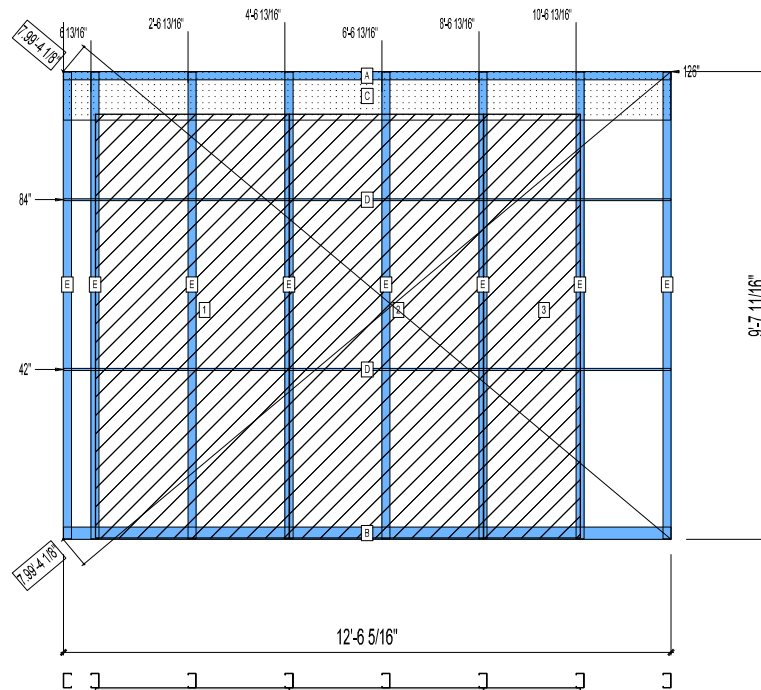
FRAME : 257 lbs

SHEATHING: 322 lbs

TOTAL: 579 lbs

APPROVED

By hhuynh at 9:37 am, Nov 24, 2008



**BUNDLE AND
SHIP TO SITE
WALL UNDER BEAM**

PIECES LIST

LABEL	QTY	SIZE	LENGTH	USE
A	1	362T200-68	12'-6 5/16"	TOP TRACK
B	1	362T300-68	12'-6 5/16"	BOTTOM TRACK
C	1	1200D-54	12'-6 1/4"	STRAP
D	2	150U50-54	12'-6 1/8"	HORIZONTAL BRACING
E	8	362S200-68	9'-7 1/2"	STUD

SHEATHING

LABEL	QTY	CODE	THICK	SIZE	SCREWS
1	1	SB-DENSARMOR	5/8"	4'-0" X 8'-8 7/8"	2 - 12
2	1	SB-DENSARMOR	5/8"	4'-0" X 8'-8 7/8"	2 - 12
3	1	SB-DENSARMOR	5/8"	2'-0" X 8'-8 7/8"	2 - 12

12-6001

Jewish Home for the Aging

1885 Victory Blvd. Reseda, CA

FM-07-109

CREATED BY: HH

FrameMax, Inc.
13915 Danielson St
Suite 100
Poway, CA 92064
www.frame-max.com



© FrameMax Inc.

HEIGHT : 10'-6" POINTS: 2.00 Points.

SPACING : 24"

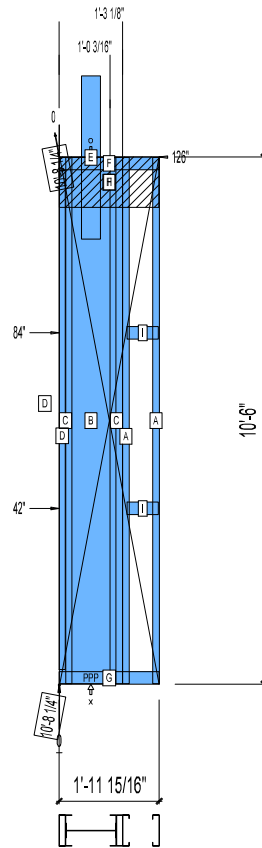
1st STUD: 16"

WEIGHTS :

FRAME : 375 lbs

TOTAL: 375 lbs

APPROVED
By hhuynh at 9:37 am, Nov 24, 2008



**BUNDLE AND
SHIP TO SITE**

PIECES LIST

LABEL	QTY	SIZE	LENGTH	USE
A	2	750S162-54	10'-5 13/16"	STUD
B	1	1200i350p1062	10'-5 13/16"	PACO
C	2	750i300p706	10'-5 13/16"	PACO
D	1	750T150-54	9'-11 1/4"	CAP
E	1	B	3'-3"	HOLDDOWN
F	1	750T300-68	1'-11 15/16"	TOP TRACK
G	1	750T300-68	1'-11 15/16"	BOTTOM TRACK
H	1	1200D-54	1'-11 13/16"	STRAP
I	2	750T300-68	7 1/2"	BLOCK

12-6002

Jewish Home for the Aging

1885 Victory Blvd. Reseda, CA

FM-07-109

CREATED BY: HH

FrameMax, Inc.
13915 Danielson St
Suite 100
Poway, CA 92064
www.frame-max.com



© FrameMax Inc.

HEIGHT : 10'-6" POINTS: 1.88 Points.

SPACING : 24"

1st STUD: 24"

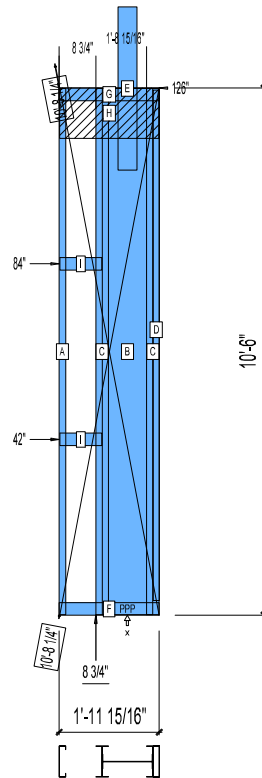
WEIGHTS :

FRAME : 353 lbs

TOTAL: 353 lbs

APPROVED

By hhuynh at 9:37 am, Nov 24, 2008



**BUNDLE AND
SHIP TO SITE**

PIECES LIST

LABEL	QTY	SIZE	LENGTH	USE
A	1	750S162-54	10'-5 13/16"	STUD
B	1	1200i350p1062	10'-5 13/16"	PACO
C	2	750i300p706	10'-5 13/16"	PACO
D	1	750T150-54	10'-2"	CAP
E	1	B	3'-3"	HOLDDOWN
F	1	750T300-68	1'-11 15/16"	BOTTOM TRACK
G	1	750T300-68	1'-11 15/16"	TOP TRACK
H	1	1200D-54	1'-11 3/4"	STRAP
I	2	750T300-68	10"	BLOCK

12-6003

Jewish Home for the Aging

1885 Victory Blvd. Reseda, CA

FM-07-109

CREATED BY: HH

FrameMax, Inc.
13915 Danielson St
Suite 100
Poway, CA 92064
www.frame-max.com



© FrameMax Inc.

HEIGHT : 10'-6"

POINTS: 2.89 Points.

SPACING : 24"

1st STUD: 24"

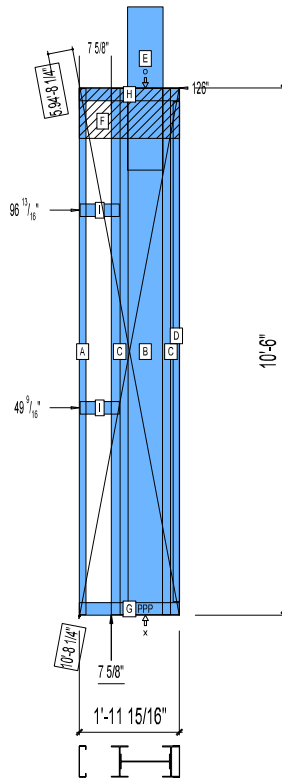
APPROVED

By hhuynh at 9:37 am, Nov 24, 2008

WEIGHTS :

FRAME : 577 lbs

TOTAL: 577 lbs



**BUNDLE AND
SHIP TO SITE**

PIECES LIST

LABEL	QTY	SIZE	LENGTH	USE
A	1	750S162-54	10'-5 13/16"	STUD
B	1	1200i350p1420	10'-5 13/16"	PACO
C	2	750i400p1268	10'-5 13/16"	PACO
D	1	750T150-54	9'-11 1/2"	CAP TRACK
E	1	F	3'-3"	HOLDDOWN
F	1	1200D-54	2'-0"	STRAP
G	1	750T300-68	1'-11 15/16"	BOTTOM TRACK
H	1	750T300-68	1'-11 15/16"	TOP TRACK
I	2	750T300-68	9 5/16"	BLOCK

12-6004

Jewish Home for the Aging

1885 Victory Blvd. Reseda, CA

FM-07-109

CREATED BY: HH

FrameMax, Inc.
13915 Danielson St
Suite 100
Poway, CA 92064
www.frame-max.com



© FrameMax Inc.

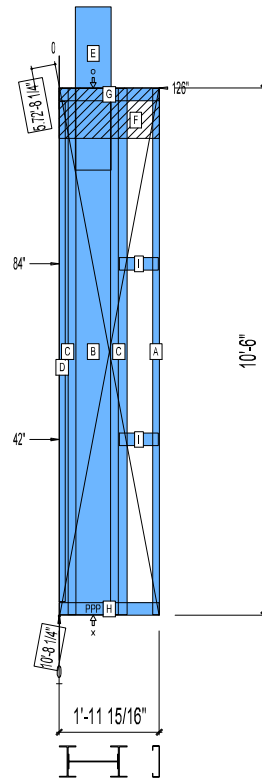
HEIGHT : 10'-6"
SPACING : 24"
1st STUD: 24"

POINTS: 2.89 Points.

APPROVED
By hhuynh at 9:37 am, Nov 24, 2008

WEIGHTS :
FRAME : 577 lbs

TOTAL: 577 lbs



**BUNDLE AND
SHIP TO SITE**

PIECES LIST

LABEL	QTY	SIZE	LENGTH	USE
A	1	750S162-54	10'-5 13/16"	STUD
B	1	1200i350p1420	10'-5 13/16"	PACO
C	2	750i400p1268	10'-5 13/16"	PACO
D	1	750T150-54	9'-11 1/2"	CAP
E	1	F	3'-3"	HOLDDOWN
F	1	1200D-54	2'-0"	STRAP
G	1	750T300-68	1'-11 15/16"	TOP TRACK
H	1	750T300-68	1'-11 15/16"	BOTTOM TRACK
I	2	750T300-68	9 5/16"	BLOCK

12-6005

Jewish Home for the Aging

1885 Victory Blvd. Reseda, CA

FM-07-109

CREATED BY: HH

FrameMax, Inc.
13915 Danielson St
Suite 100
Poway, CA 92064
www.frame-max.com



© FrameMax Inc.

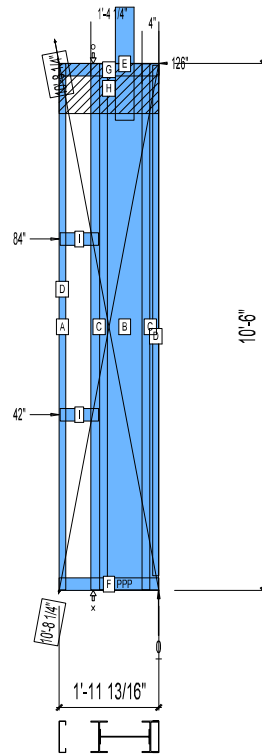
HEIGHT : 10'-6"
SPACING : 24"
1st STUD: 16"

POINTS: 2.54 Points.

APPROVED
By hhuynh at 9:37 am, Nov 24, 2008

WEIGHTS :
FRAME : 500 lbs

TOTAL: 500 lbs



**BUNDLE AND
SHIP TO SITE**

PIECES LIST

LABEL	QTY	SIZE	LENGTH	USE
A	1	750S162-54	10'-5 13/16"	STUD
B	1	1200i350p1420	10'-5 13/16"	PACO
C	2	750i400p1268	10'-5 13/16"	PACO
D	1	750T150-54	10'-2"	CAP
E	1	B	2'-3"	HOLDDOWN
F	1	750T300-68	1'-11 13/16"	BOTTOM TRACK
G	1	750T300-68	1'-11 13/16"	TOP TRACK
H	1	1200D-54	1'-11 13/16"	STRAP
I	2	750T300-68	9 3/16"	BLOCK

12-6006

Jewish Home for the Aging

1885 Victory Blvd. Reseda, CA

FM-07-109

CREATED BY: HH

FrameMax, Inc.
13915 Danielson St
Suite 100
Poway, CA 92064
www.frame-max.com



© FrameMax Inc.

HEIGHT : 10'-6" POINTS: 2.54 Points.

SPACING : 24"

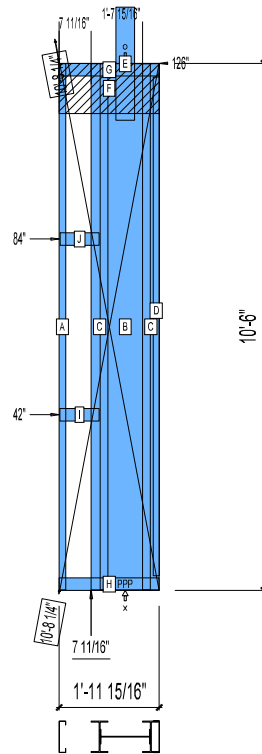
1st STUD: 24"

APPROVED
By hhuynh at 9:37 am, Nov 24, 2008

WEIGHTS :

FRAME : 500 lbs

TOTAL: 500 lbs



**BUNDLE AND
SHIP TO SITE**

PIECES LIST

LABEL	QTY	SIZE	LENGTH	USE
A	1	750S162-54	10'-5 13/16"	STUD
B	1	1200i350p1420	10'-5 13/16"	PACO
C	2	750i400p1268	10'-5 13/16"	PACO
D	1	750T150-54	9'-11 1/4"	CAP
E	1	B	2'-3"	HOLDDOWN
F	1	1200D-54	2'-0"	STRAP
G	1	750T300-68	1'-11 15/16"	TOP TRACK
H	1	750T300-68	1'-11 15/16"	BOTTOM TRACK
I	1	750T300-68	9 3/8"	BLOCK
J	1	750T300-68	9 5/16"	BLOCK

12-6044

Jewish Home for the Aging

1885 Victory Blvd. Reseda, CA

FM-07-109

CREATED BY: HH

FrameMax, Inc.
13915 Danielson St
Suite 100
Poway, CA 92064
www.frame-max.com



© FrameMax Inc.

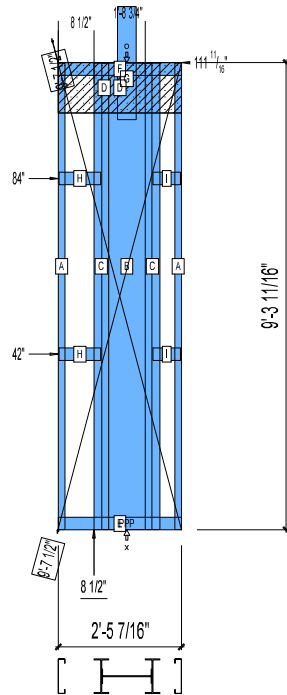
HEIGHT : 10'-6"
SPACING : 24"
1st STUD: 24"

POINTS: 2.45 Points.

APPROVED
By hhuynh at 9:37 am, Nov 24, 2008

WEIGHTS :
FRAME : 463 lbs

TOTAL: 463 lbs



**BUNDLE AND
SHIP TO SITE
WALL UNDER BEAM**

PIECES LIST			
LABEL	QTY	SIZE	LENGTH USE
A	2	825S162-54	9'-3 1/2" STUD
B	1	1200i350p1420	9'-3 1/2" PACO
C	2	825i350p1247	9'-3 1/2" PACO
D	2	1200D-54	2'-5 1/2" STRAP
E	1	825T300-68	2'-5 7/16" BOTTOM TRACK
F	1	825T300-68	2'-5 7/16" TOP TRACK
G	1	B	2'-3" HOLDDOWN
H	2	825T300-54	9 15/16" BLOCK
I	2	825T300-54	6 9/16" BLOCK

12-6046

Jewish Home for the Aging

1885 Victory Blvd. Reseda, CA

FM-07-109

CREATED BY: HH

FrameMax, Inc.
13915 Danielson St
Suite 100
Poway, CA 92064
www.frame-max.com



© FrameMax Inc.

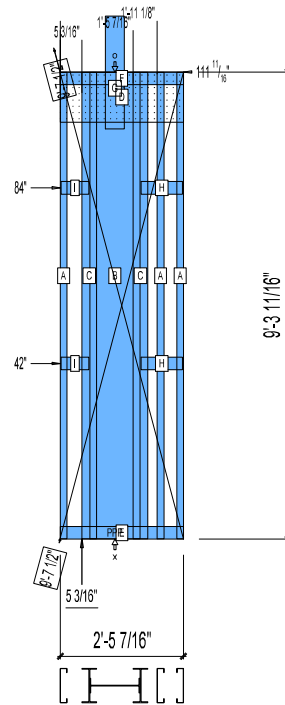
HEIGHT : 10'-6"
SPACING : 24"
1st STUD: 24"

POINTS: 2.52 Points.

APPROVED
By hhuynh at 9:37 am, Nov 24, 2008

WEIGHTS :
FRAME : 479 lbs

TOTAL: 479 lbs



**BUNDLE AND
SHIP TO SITE
WALL UNDER BEAM**

PIECES LIST			
LABEL	QTY	SIZE	LENGTH USE
A	3	825S162-54	9'-3 1/2" STUD
B	1	1200i350p1420	9'-3 1/2" PACO
C	2	825i350p1247	9'-3 1/2" PACO
D	1	1200D-54	2'-5 1/2" STRAP
E	1	825T300-68	2'-5 7/16" BOTTOM TRACK
F	1	825T300-68	2'-5 7/16" TOP TRACK
G	1	B	2'-3" HOLDDOWN
H	2	825T300-54	9 15/16" BLOCK
I	2	825T300-54	6 9/16" BLOCK